

Acesonic®

User Manual

KOD-4000 Karaoke-On-Demand Jukebox



NOTE – Your Acesonic KOD-4000 Karaoke-On-Demand Jukebox arrives with everything you need to start making music and performing except a microphone, amplifier, and speakers. These can be obtained from Acesonic, or you can use any standard audio equipment that conforms to contemporary standards.

Thank you for purchasing Acesonic's KOD-4000 Karaoke-On-Demand Jukebox. Acesonic takes pride in providing its customers with only the most advanced and highest quality products on the market.

With proper care and use you will get many years of satisfying use from your Acesonic product.

Be sure to keep original packaging in case re-shipping is required for returns or repairs.

Care and cleaning: Use a slightly damp cloth to clean the front panel and other surfaces of the KOD-4000. Do not use the device in areas that are wet or prone to dampness. Always allow sufficient room around the device to provide sufficient air flow for cooling.

First Things First

Before using your KOD-4000, there are a few things you should do and know:

- Check to see that your local power outlets supply the correct voltage for the AC adaptor.
- Do not open the device as there are no user-serviceable parts inside. For repairs, contact the local distributor, an authorized service center or Acesonic's U.S. Headquarters.
- When the system will not be used for a long time, disconnect the power plug from the wall and remove all connecting cables for proper storage.

Getting Started

Your Acesonic KOD-4000 Karaoke-On-Demand Jukebox is designed for years of enjoyment. Please take a moment to review the following instructions for proper use and care of the player.

Included Accessories

Your KOD-4000 includes the following items:

- ACESONIC KOD-4000 Karaoke-On-Demand Jukebox (1)
- Remote Control (1)
- HDMI Cable (1)
- Power Cord (1)
- User Manual (1)

If your box is missing any of these items, contact your Acesonic dealer.

Precautions

Player precautions:

- Avoid moisture, water, and dust.
- Do not place the player in a moist environment or where dust will build up, such as near a fan.
- If exposed to water, immediately turn off the player and unplug. Consult your dealer or an authorized service center – using the player in this state could cause fires or fatal electric shocks.
- Avoid high temperatures. Do not place the player in direct sunlight or near any heaters.
- Unplug the player when it will not be in use for an extended period of time.
- Use the plug, not the cord, to disconnect the player from its wall outlet.
- Never handle the power cord with wet hands. Replace the cord if it is damaged or if wires are exposed, and check it every few months for signs of wear and use.

Installation precautions:

- Select an area that is level, dry, and has a moderate temperature all year.
- Do not use the player on its side.
- Do not place the player next to items that vibrate such as speakers.
- Do not put heavy objects on top of your player.
- Allow space for your player to ventilate. The vents on your player are designed to circulate air and moderate its internal temperature. Blocking these vents may damage the player.

User Repair Precautions

No parts of this player are to be serviced by the user. If the player fails to operate or if you feel it needs servicing, turn off the player, unplug it, and contact an Acesonic dealer or service center.

Player Specifications

- One (1) year manufacturer warranty
- Lifetime technical support
- Worldwide video compatibility with settings for NTSC, PAL, and HDMI video formats
- Universal power supply: AC 100 ~ 240 V
- Designed in the U.S.A.

USB 2.0 Specifications (Compatible Media Formats)

Your KOD-4000 is a robust player that can accept a wide variety of media formats (USB flash drives formatted in FAT32, USB hard drives formatted in NTFS and FAT32 up to 2TB)

- Audio: MP3/LRC, AC3, AAC, WMA, WMAPro
- Video: MPG-TS, MP3+G, VOB, MPEG1/2/4, Xvid, MKV, AVI, WMV9, VC1, H.264

Some methods of encoding (“ripping”) audio and video formats may affect playback. Use standard or pre-set encoding settings, if possible.

File defects may also affect video quality.

The media formats not described in this manual are not compatible with the unit.

Video Signal Formats

The KOD-4000 supports NTSC, a broadcast format generally found in the U.S., Canada, most countries in South America, Japan, South Korea, and the Philippines.

The KOD-4000 also supports the PAL format, which is used in many parts of Europe, Asia, and South America.

The KOD-4000 also supports HDMI 1.3 format, the standard for 1080-HD digital video delivery featuring deep color.

Check your video device to see which standard it is compatible with.

Audio Signal Formats

The KOD-4000 features RCA composite and component, and HDMI delivery of automatic audio syncing.

Features

The KOD-4000 is a multi-function professional hard drive Karaoke-On-Demand Jukebox. This KOD is perfect for the club, DJs, KJs, pub, rentals, restaurants, other public entertainment or if you simply want to have the ultimate karaoke system for any occasion!

- Upscaling delivers exceptional image quality from standard DVDs with up to 1080 via HDMI output.
- Multi-format feature supports all types of karaoke and video formats i.e. MP3G, MP3, MKV, MPEG1/2/4, WMV, AVI and more!
- MP3+G Superimpose - You can replace any MP3+G's background with your video or pictures.
- Supports high capacity hard disks (up to 8TB) and unlimited song capacity expansion via attached network drive.
- Song Import - Quickly update your song library using batch imports/uploading.
- Media Center allows you to enjoy your family photos, videos, or simply listen to your favorite tunes.
- Use your iPad® or Android tablets as a fully functional remote control or for song search features! Connect up to 250 devices at the same time.
- 1 Front USB 2.0 port for adding songs, media playback
- Easy to find your songs. You can search songs by Language, Title, Artist, Genre, and Gender.
- Full karaoke function with 2 microphone inputs.
- Song database management.
- Multiple KOD-4000 players (with or without a local hard drive) can be attached to a network drive to setup client-server file-sharing for a large environment or commercial operation
- Supports Unicode up to 20 different languages.
- RS-232 port can be connected to a coin-acceptor, receive commands from a PC, or a central controller for maximum integration
- Built-in multiple-key encryption to protect all of your content and separate users can be assigned different keys to avoid unwanted file-sharing.
- Future Updates - Firmware updates with new features will be released

Cleaning

- Use a soft cloth to clean the surface of the unit.
- Always wipe from the center to the edges.
- DO NOT use circular motions.
- DO NOT use household cleaning products on the unit, unless they are specifically formulated for cleaning player products.

Reminder: Never attempt to play cracked or unsupported files with your player. It may cause the player to malfunction.

Before Operation

Playable Media

This unit supports the following formats:

MP3, WAV, WMA, MPEG-1, MPEG-2 (MPG/VOB), MPEG-4 (AVI), JPEG, and MP3+G files

CAUTION

Power Cord

Handle the power cord only by its plug. Do not unplug the power cord cord by tugging or yanking on the cord. Touching or unplugging the cord while your hands are wet may lead to an electric shock or a short circuit. If the cord becomes damaged or its wires become exposed, please replace the cord as soon as possible in order to prevent an electric fire or shock. Check the power cord every few months to ensure it is functioning properly.



Front Panel Functions and Operation

1. **POWER BUTTON:** Press this button to toggle the KOD-4000 from Standby Mode to ON as long as the KOD is connected to a power source.
2. **USB:** This interface allows the KOD-4000 to access a USB/flash/thumb drive or USB hard drive for media playback or song importing. USB 1 or 2 or 3 will show up in the Media Center depending on how many USB devices you have connected.
3. **REMOTE SENSOR:** Receives signals from the remote control.
4. **MICROPHONE INPUTS:** Two microphone inputs with adjustable volume, delay volume and time, and echo gain.



Back Panel Functions and Operation

- 1. RCA COMPONENT OUTPUTS:** Connect a component RCA cable to a compatible television or amplifier.
- 2. RCA VIDEO OUTPUT:** Connect an RCA composite video jack to a compatible television or amplifier.
- 3. RCA AUDIO OUTPUT:** Connect L and R RCA composite audio jacks to a compatible television or amplifier.
- 4. POWER INPUT:** AC 100 ~ 240V / 50 ~ 60 Hz.
- 5. COAXIAL OUTPUT:** Coaxial digital output to connect with a digital amplifier or receiver.
- 6. OPTICAL OUTPUT:** SPDIF Optical output for connection with a digital amplifier or receiver.
- 7. HDMI OUTPUT:** Connect an HDMI cable to a compatible television or amplifier (HDMI 1.3).
- 8. LAN (LOCAL AREA NETWORK):** Connects the KOD-4000 to a network drive using an Ethernet cable.
- 9. IR EXTENDER:** Connect to an IR extender device for additional IR remote control.
- 10. RS-232:** Connect an RS-232 cable to a compatible device.

Remote Control Functions



1. **POWER:** Press this toggle the KOD-4000 from Standby Mode to ON as long as the KOD is connected to a power source and the rear power switch is ON.
2. **MUTE:** Turn the sound ON or OFF.
3. **RED/GREEN/YELLOW/BLUE FUNCTION BUTTONS:** Press these buttons for screen-specific functions as denoted in various menus.
4. **POP-UP MENU:** Press to activate the disc Pop-Up Menu (if available) or EDIT MENU in the MEDIA CENTER.
5. **MENU:** Use to go to the main menu, go to the previous menu, or exit the MEDIA CENTER.
6. **RETURN:** Use to return to the main menu from sub-menus.
7. **NUMERIC KEYPAD (0-9):** Used to enter numbers as needed.
8. **CLEAR:** Use to backspace and delete or clear characters.
9. **DIRECTION BUTTONS:** Used for navigation in menus.
10. **ENTER BUTTON:** Used to confirm entry or selection.
11. **AUDIO MPX:** Press to switch between 'Melody' and 'Vocal' modes during playback.
12. **STOP BUTTON:** Press to STOP playback.
13. **PLAY/PAUSE BUTTON:** Press the button while media or disc is playing to pause and resume playback.
14. **INFO BUTTON:** Press this button to display the current playlist.
15. **FAST FORWARD BUTTON:** Press the Fast Forward button to shift the playing location forward quickly.
16. **REWIND BUTTON:** Press the Rewind Button to shift the playing location backwards quickly.
17. **SKIP TRACK FORWARD BUTTON:** Press to go to the beginning of the next track.
18. **DELETE BUTTON:** Pressing the DELETE button will remove a song from the playlist.
19. **INSERT BUTTON:** The INSERT BUTTON will insert a track to the playlist after the current track.
20. **REPEAT BUTTON:** Repeats the track currently playing.
21. **BACKGROUND BUTTON:** During MP3+G playback, the BACKGROUND button is used to toggle a video or picture that is playing in the background.
22. **FAVORITE BUTTON:** Lets you save a track to a FAVORITE memory location in the MY FAVORITE MENU.
23. **PAGE UP AND DOWN BUTTONS:** Press to scroll down through file lists one full page at a time.
24. **MUSIC KEY BUTTONS:** Used to raise or lower the pitch. Only used in HD mode.
 1. **SHARP BUTTON (#)** - Raises the key by a half step.
 2. **FLAT BUTTON (b)** - Lowers the key by a half step.
25. **MIC VOL BUTTONS (+/-):** Used to bring up the Microphone menu in HD mode.
26. **MUSIC VOL BUTTONS (+/-):** Used to adjust the volume of music audio output.

BASIC OPERATIONS

Turn ON the KOD-4000 using the POWER BUTTON on the front panel or remote. When powering on the unit, please wait for the unit to load.



Main Menu Operations:

- Use the DIRECTION BUTTONS to select an option from the Main Splash Screen.
- Press the ENTER BUTTON to choose an option.
- Pressing the RETURN BUTTON will exit to the next highest menu level.



Song Search

Playing a song:

- Press ENTER to go into the Song Search.
- Use the DIRECTION BUTTONS and press ENTER to add a highlighted song to the playlist.
- While a song is playing, press MENU to toggle the Song Search Menu.
- Press the PAGE UP and DOWN BUTTONS to scroll through file lists one full page at a time.

Searching for a song:

- Use the LEFT & RIGHT DIRECTION BUTTONS to navigate the menu.
- Use the UP & DOWN DIRECTION BUTTONS to search for songs by Language, Title, Genre, Artist, or Gender.
- Press the YELLOW BUTTON for Title Search.
 - 1.Type in the song name using the DIRECTION BUTTONS and ENTER to display available songs.
 - 2.Navigate to the right of the menu and press ENTER to add a song to the playlist.
 - 3.Press the RED BUTTON to change the language.
- Press the BLUE BUTTON for Artist Search.
 - 1.Type in the artist name using the DIRECTION BUTTONS and ENTER to display available artists.
 - 2.Press the RED BUTTON to change the language.
 - 3.Navigate to the right of the menu and press ENTER to choose an artist and bring up the artist's song page.
 - 4.Use the DIRECTION BUTTONS and ENTER to add a song to the playlist.

Skipping a song

- Press the STOP button to stop playback of the current song and go to the next song. Adding a song to the playlist.
- During playback, press the MENU BUTTON to bring up the song search menu.
- Search and highlight a song and press ENTER to add a song to end of the playlist.
- Search and highlight a song and press INSERT to insert a song after the current song.

Deleting a song from the playlist

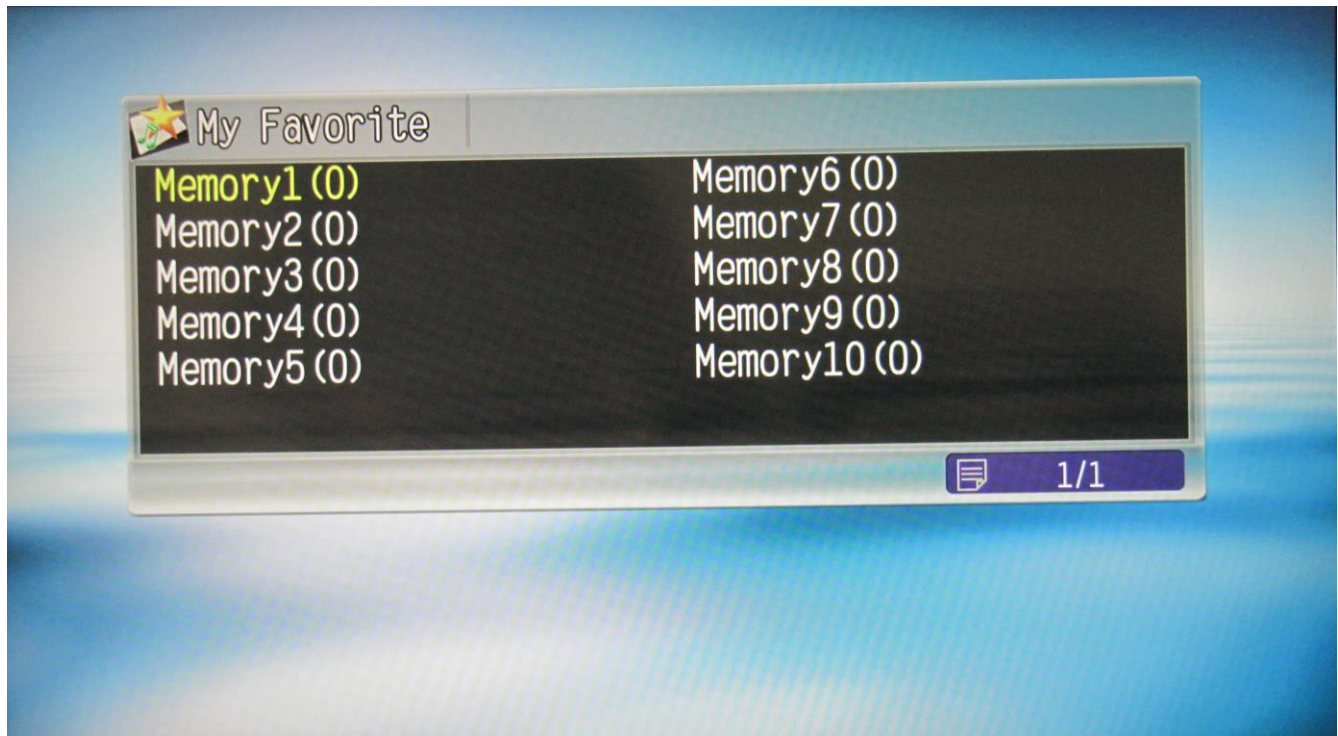
- During playback, press the INFO BUTTON to bring up the playlist.
- Use the DIRECTION BUTTONS and highlight a song and press DELETE to remove a song from the playlist.



Microphone Settings Menu

- Press the MIC VOL + or – BUTTONS to bring up the Microphone Settings Menu.
- Navigate the Microphone Settings Menu using the UP and DOWN DIRECTION BUTTONS.
- Press the LEFT and RIGHT DIRECTION BUTTONS or the MIC VOL + or – BUTTONS when MIC1 Volume or MIC2 Volume is selected to increase or decrease Microphone 1 or Microphone 2 volumes.
- Press the LEFT and RIGHT DIRECTION BUTTONS or the MIC VOL + or – BUTTONS when Delay Volume is selected to increase or decrease the volume of the delay effect.
- Press the LEFT and RIGHT DIRECTION BUTTONS or the MIC VOL + or – BUTTONS when Delay Time is selected to increase or decrease the amount of time between the delay effect.
- Press the LEFT and RIGHT DIRECTION BUTTONS or the MIC VOL + or – BUTTONS when

Echo Gain is selected to increase or decrease the amount of echo.



My Favorite

Adding My Favorite songs to the playlist

- Press ENTER to go into My Favorite to list the 10 Memory Locations for Favorite songs.
- Use the DIRECTION BUTTONS and ENTER to go into any of the Memory Locations to list the Favorite songs stored in that Memory Location.
- Press ENTER to add a song to the playlist.

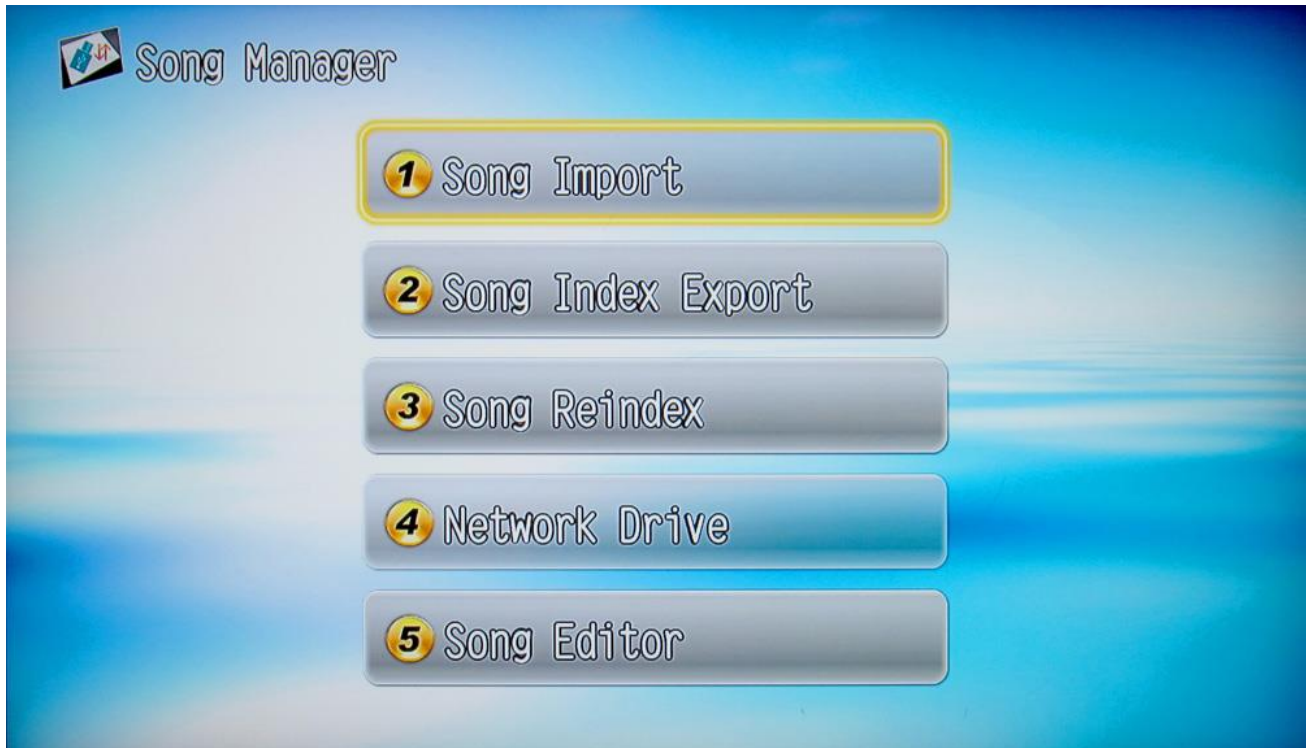
Adding songs to My Favorites

- While a song is playing press FAVORITE to add the song to a Favorite Memory Location.
 1. Use the DIRECTION BUTTONS to choose a Favorite Memory Location for the song.
 2. Press ENTER to select the sub menu.
 3. Press FAVORITE again to add the song to the Favorite Memory Location.

Removing a song from a Favorite Memory Location

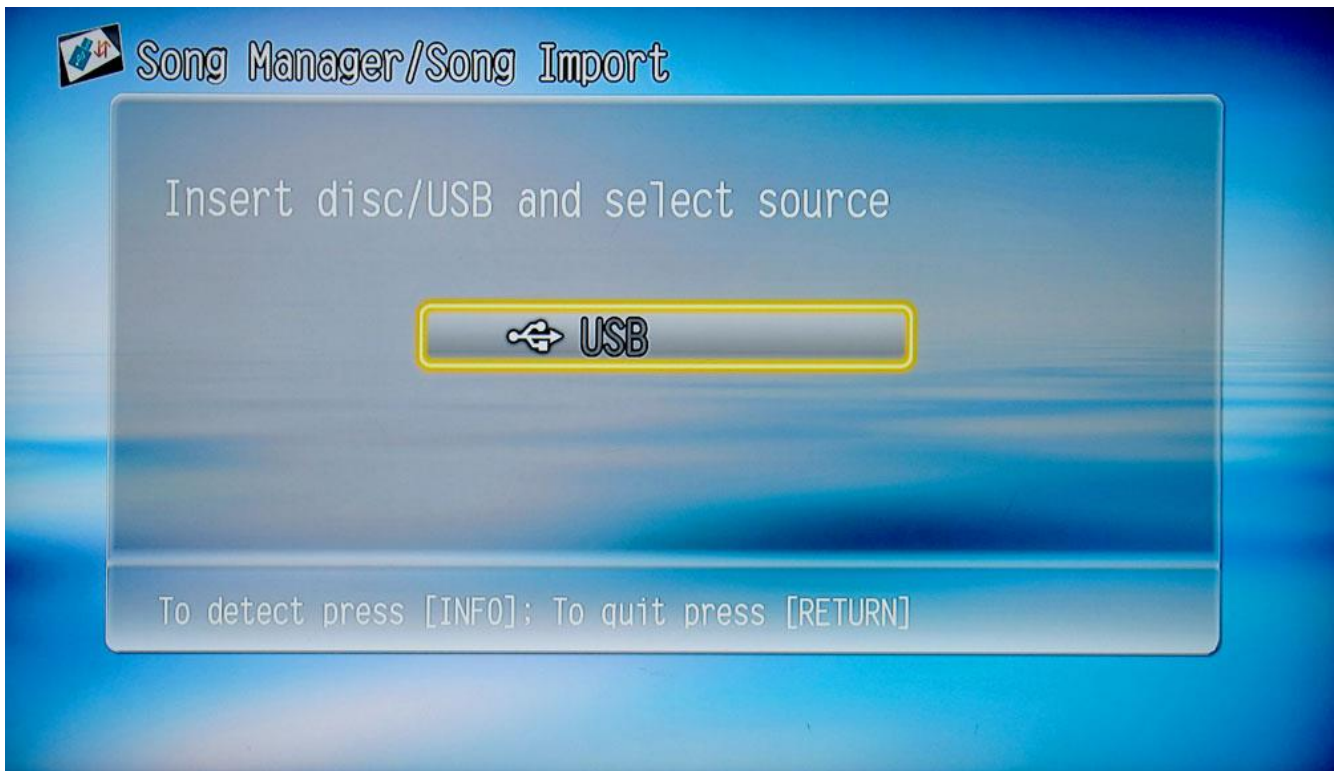
- Press ENTER to go into My Favorite to list the 10 Memory Locations for Favorite songs.
- Use the DIRECTION BUTTONS to highlight a Memory Location and press ENTER to go into a Memory Location.
- Use the DIRECTION BUTTONS to highlight the song you want to remove.

- Press DELETE twice to remove the song from a Favorite Memory Location.



Song Manager

- Use the DIRECTION BUTTONS and ENTER to choose an option.



Song Import

Importing music files to the HDD from an USB device

- In the USB flash drive, create a folder called mp3gsong_add.
- Insert all music files (CD-G, MP3-G) into the folder above.

Note: File name must be modified in the following format:

Artist-SongTitle.cdg/mp3/g
(ie. Mike-Tomorrow.cdg; Mike-Tomorrow.mp3 + Mike-Tomorrow.g)

- Plug the USB flash drive into the KOD unit, select SONG IMPORT, and select USB

Importing video files to the HDD from USB flash drive.

- In the USB flash drive, create a folder called mtvsong_add.
- Insert all music files (AVI, MP4, MKV) into the folder above.

Note: File name must be modified in the following format:

Artist-SongTitle[Language][Audio Channel].avi
(ie. Andy Grammer-Fine by me[E][R].avi)

Language Code

Language	Code
English	E
Mandarin	M
Cantonese	C
Vietnamese	VIE
Thai	THA

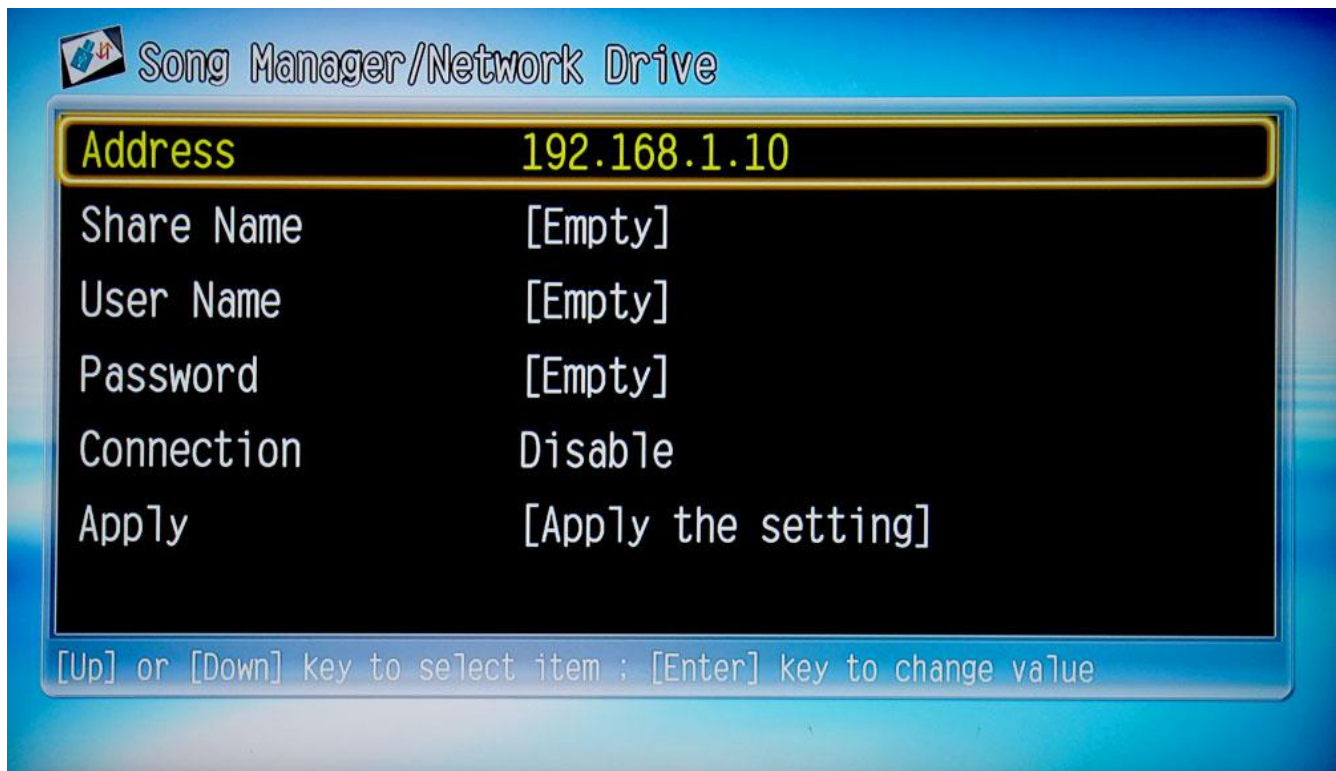
Audio Code

Audio Channel	Code
Left Track	L
Right Track	R
Track 0	0
Track 1	1
Stereo	S

- Plug the USB flash drive into the KOD unit, select SONG IMPORT, and select USB

Reindexing files

- Navigate to Song Reindexing.
- Press ENTER to reindex the newly added songs to the searchable database.



Network Drive

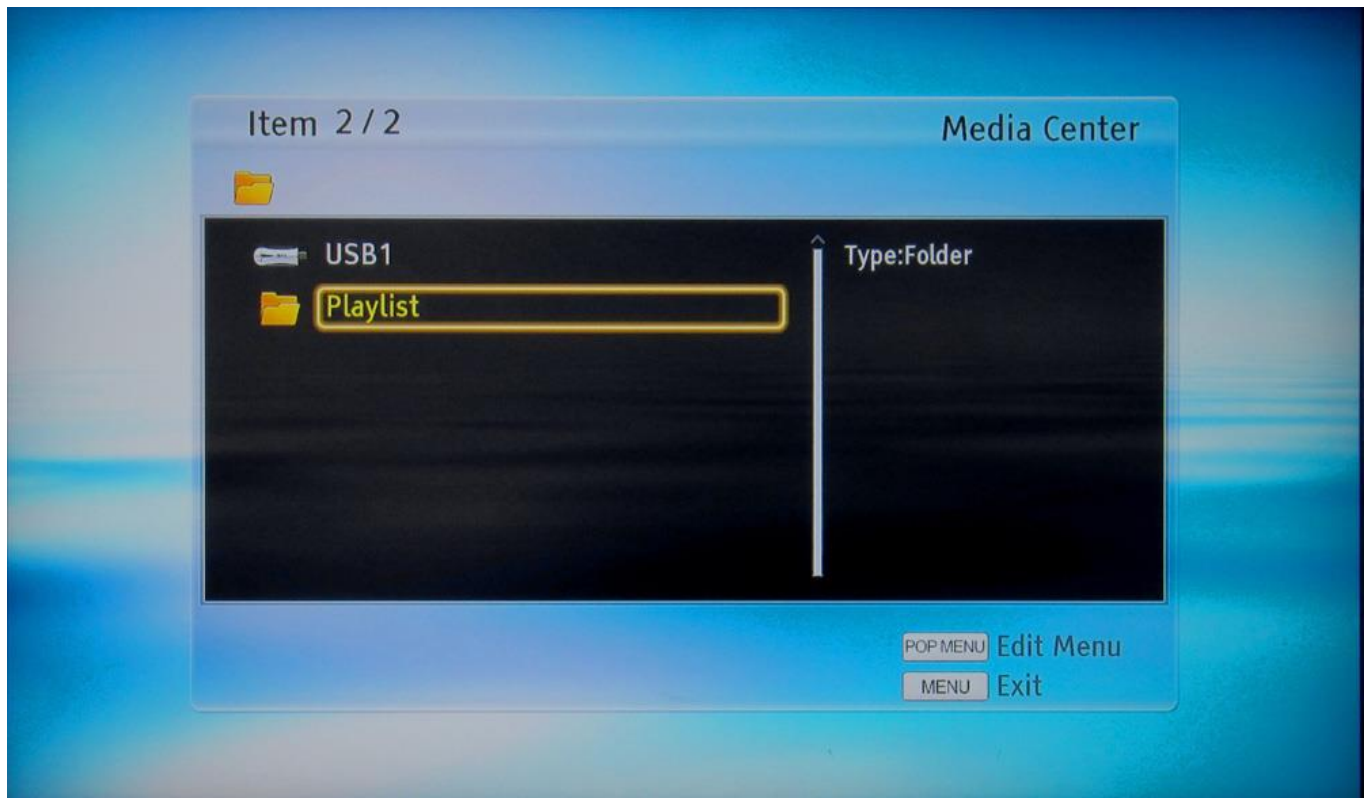
If you know the IP address, Share Name, User Name, and Password you can access a Network Drive via an Ethernet cable.

- Press ENTER when Apply is highlighted to access the Network Drive



Song editor

- Navigate Song Editor
- Use the UP and DOWN Buttons and ENTER or the GREEN button to choose a song you want to edit.
 1. Use the UP and DOWN buttons, and ENTER to navigate to TITLE, and ARTIST.
 1. Use the DIRECTION buttons and ENTER to type in your desired song information.
 2. Use the backspace button or DELETE to erase characters. Use the GREEN button to confirm, or RED button to exit
 3. Use the UP and DOWN buttons to navigate to LANGUAGE, and the LEFT and RIGHT arrows to change language.
 4. Press RETURN to exit to previous menu
- If you want to remove a song from the database, highlight a song and hit the RED button.
 1. Press ENTER to remove the song, and RETURN to cancel.



Media Center

Accessing media

- Connected media sources will be displayed in the Media Center Menu.
- Use the DIRECTION BUTTONS and ENTER to navigate the folders for your connected media.
- Press the ENTER or PLAY BUTTON to play it.
- **Note:** Media will be indexed into Photo, Music, Video, and AVCHD folders.

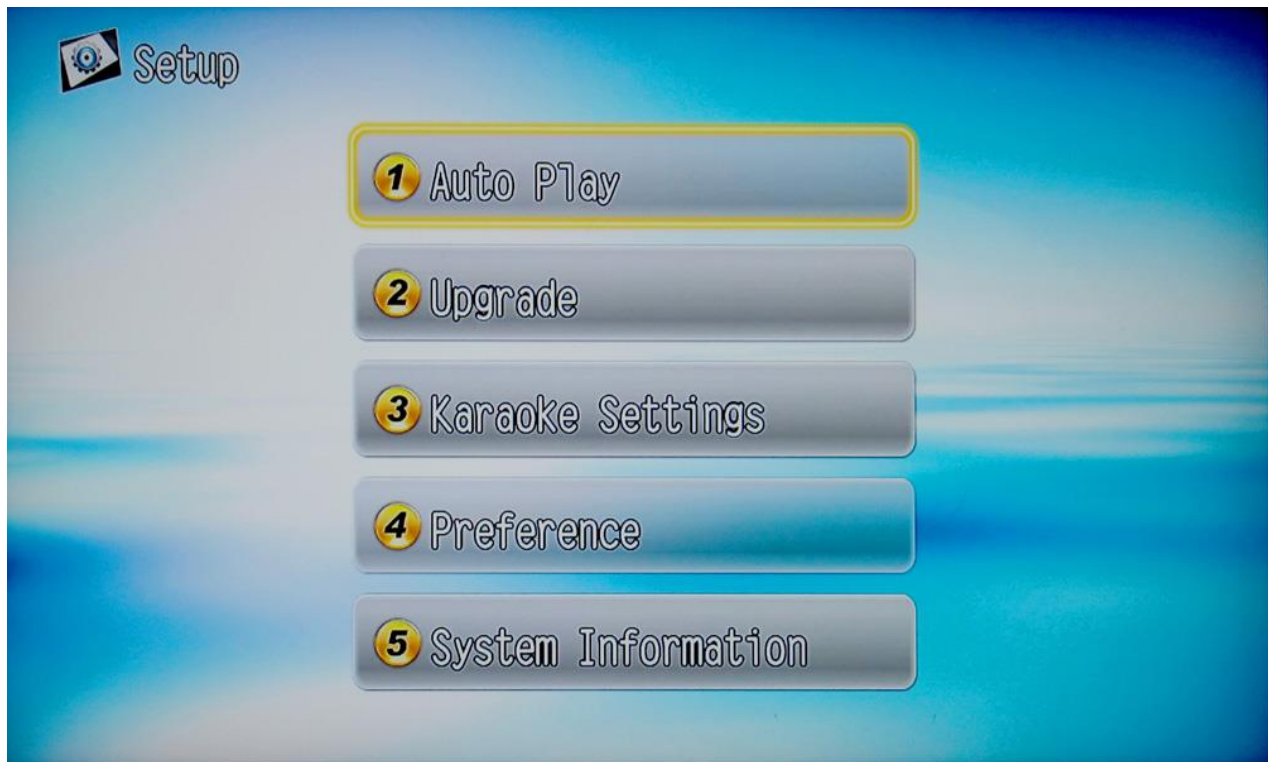
Creating a playlist

- Navigate to a folder containing media.
- Press the POP-UP MENU BUTTON.
- Navigate the POP-UP MENU using the DIRECTION BUTTONS to select or clear all media to be added to playlist.
- Navigate to specific media using the DIRECTION BUTTONS and press the POP-UP MENU BUTTON to add specific items to the playlist.

Editing your playlist

- Go into the Playlist folder in the Media Center.
- Press the POP-UP MENU BUTTON.
- Navigate the POP-UP MENU using the DIRECTION BUTTONS to select or clear all media to be removed from the playlist.

- Navigate to specific media using the DIRECTION BUTTONS and press the POP-UP MENU BUTTON to remove specific items from the playlist.



Setup

Use the DIRECTION BUTTONS and ENTER to choose an option.

Auto Play

- Use the NUMERIC KEYPAD to type in Song Numbers in the Start and End fields to auto play the songs in shuffle mode.
- Use the ENTER key to confirm it.



Setup/Upgrade

Insert disc/USB and select source
Now Version : V1.1399

 USB

To detect press [INFO]; To quit press [RETURN]

Software Upgrade

- Insert an USB device containing appropriate upgrade software.
- Select USB (USB device).
- Do not disconnect the KOD-4000 during the upgrade process.



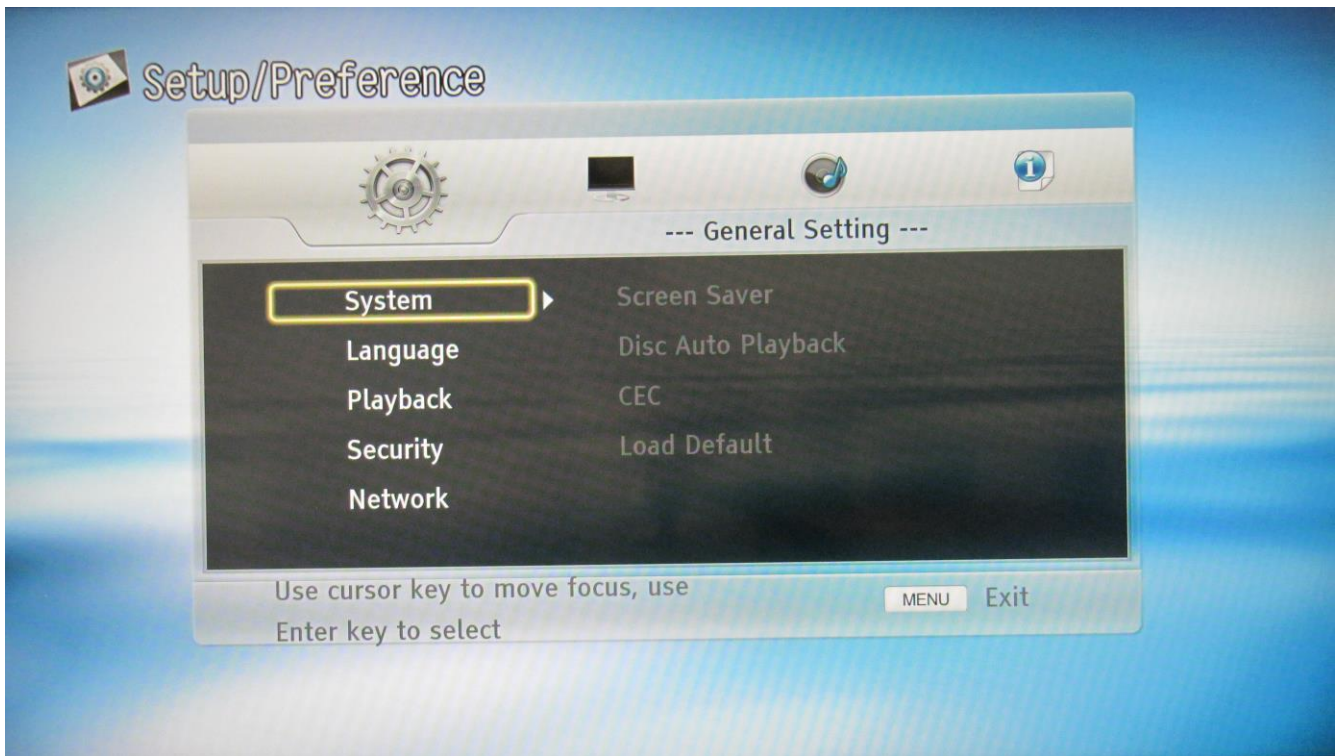
Setup/Karaoke Settings

Show Song No	◀Yes▶
Repeat Mode	Continuous
Default Melody	Instrumental
Music Volume	50
MIC Settings	
Software AP	

[Up] or [Down] key to select item ; [Enter] key to change value

Karaoke Setting

- Show Song No - Indication of song number throughout system
- Repeat Mode - Different repeat modes for repeating setting
- Default Melody - Option to play just the melody or melody + vocal
- Music Volume - Modification to volume of music
- MIC Settings - Microphone settings, including volume, threshold, echo, and delay
- Software AP - configuration for Wi-Fi dongle attachment on front USB port



Preference

Press the UP and DOWN DIRECTION BUTTONS or ENTER to enter or exit a main preference category.

1. General Setting

1. System - Press the LEFT and RIGHT DIRECTION BUTTONS or ENTER to enter and exit the Sub-Menu. Press the UP and DOWN DIRECTION BUTTONS to navigate the Sub-Menu.

1. Screen Saver

1. Press the RIGHT DIRECTION BUTTON or ENTER to select the Sub-Menu.
2. Press the UP and DOWN DIRECTION BUTTONS to select "On" or "Off."
3. Press the ENTER BUTTON to confirm it.

2. Disc Auto Playback

1. Press the RIGHT DIRECTION BUTTON or ENTER to select the Sub-Menu.
2. Press the UP and DOWN DIRECTION BUTTONS to select "On" or "Off."
3. Press the ENTER BUTTON to confirm it.

3. CEC (Consumer Electronics Control)

1. Press the RIGHT DIRECTION BUTTON or ENTER to select the Sub-Menu.
2. Press the UP and DOWN DIRECTION BUTTONS to select "On" or "Off."
3. Press the ENTER BUTTON to confirm it.

4. Load Default

1. Press the RIGHT DIRECTION BUTTON or ENTER to bring up the prompt.
2. Use the LEFT and RIGHT DIRECTION BUTTONS and ENTER to select OK or CANCEL.

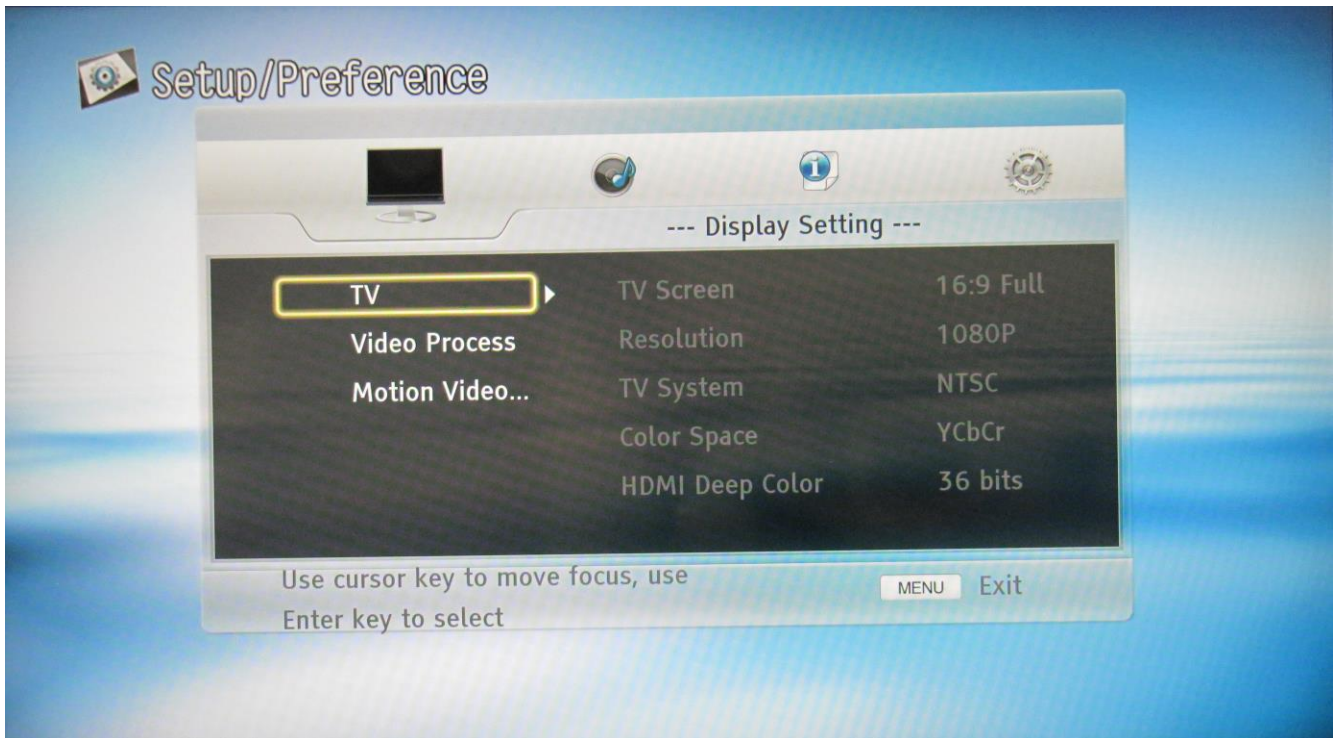
2. Language - Press the LEFT and RIGHT DIRECTION BUTTONS or ENTER to enter

and exit the Sub-Menu. Press the UP and DOWN DIRECTION BUTTONS to navigate the Sub-Menu.

1. OSD (On Screen Display)
 1. Press the RIGHT DIRECTION BUTTON or ENTER to select the Sub-Menu.
 2. Press the UP and DOWN DIRECTION BUTTONS to select “English,” “Chinese,” or “Trade Chinese.”
 3. Press the ENTER BUTTON to confirm it.
2. Menu
 1. Press the RIGHT DIRECTION BUTTON or ENTER to select the Sub-Menu.
 2. Press the UP and DOWN DIRECTION BUTTONS to select “English,” “French,” “Chinese,” “Spanish,” or “German.”
 3. Press the ENTER BUTTON to confirm it.
3. Audio
 1. Press the RIGHT DIRECTION BUTTON or ENTER to select the Sub-Menu.
 2. Press the UP and DOWN DIRECTION BUTTONS to select “English,” “French,” “Chinese,” “Spanish,” or “German.”
 3. Press the ENTER BUTTON to confirm it.
4. Subtitle
 1. Press the RIGHT DIRECTION BUTTON or ENTER to select the Sub-Menu.
 2. Press the UP and DOWN DIRECTION BUTTONS to select “English,” “French,” “Chinese,” “Spanish,” or “German.”
 3. Press the ENTER BUTTON to confirm it.
3. Playback - Press the LEFT and RIGHT DIRECTION BUTTONS or ENTER to enter and exit the Sub-Menu. Press the UP and DOWN DIRECTION BUTTONS to navigate the Sub-Menu.
 1. Closed Caption
 1. Press the RIGHT DIRECTION BUTTON or ENTER to select the Sub-Menu.
 2. Press the UP and DOWN DIRECTION BUTTONS to select “On” or “Off.”
 3. Press the ENTER BUTTON to confirm it.
 2. Angle Mark – Turn on to enjoy scenes from different angles, where applicable
 1. Press the RIGHT DIRECTION BUTTON or ENTER to select the Sub-Menu.
 2. Press the UP and DOWN DIRECTION BUTTONS to select “On” or “Off.”
 3. Press the ENTER BUTTON to confirm it.
 3. PIP Mark (Picture-In-Picture)
 1. Press the RIGHT DIRECTION BUTTON or ENTER to select the Sub-Menu.
 2. Press the UP and DOWN DIRECTION BUTTONS to select “On” or “Off.”
 3. Press the ENTER BUTTON to confirm it.
 4. Secondary Audio Mark
 1. Press the RIGHT DIRECTION BUTTON or ENTER to select the Sub-Menu.
 2. Press the UP and DOWN DIRECTION BUTTONS to select “On” or “Off.”
 3. Press the ENTER BUTTON to confirm it.
 5. Last Memory
 1. Press the RIGHT DIRECTION BUTTON or ENTER to select the Sub-Menu.
 2. Press the UP and DOWN DIRECTION BUTTONS to select “On” or “Off.”
 3. Press the ENTER BUTTON to confirm it.

4. Security - Press the LEFT and RIGHT DIRECTION BUTTONS or ENTER to enter and exit the Sub-Menu. Press the UP and DOWN DIRECTION BUTTONS to navigate the Sub-Menu.
 1. Change Password
 1. Press the RIGHT DIRECTION BUTTON or ENTER to select this option.
 2. Use the NUMERIC KEYPAD to enter the current password.
 3. If the password is correct you will be prompted to enter and confirm a new password.
 4. Press the RETURN BUTTON to cancel.
 2. Parental Control
 1. Press the RIGHT DIRECTION BUTTON or ENTER to select this option.
 2. Use the NUMERIC KEYPAD to enter the current password.
 3. If the password is correct you will be taken to a Sub-Menu.
 4. Press the UP and DOWN DIRECTION BUTTONS to select “Off,” “KID SAFE,” “G,” “PG,” “PG-13,” “PGR,” “R,” “NC-17,” or “ADULT.”
 5. Press the ENTER BUTTON to confirm it.
 6. Press the RETURN BUTTON to cancel.
 3. Country Code
 1. Press the RIGHT DIRECTION BUTTON or ENTER to select this option.
 2. Use the NUMERIC KEYPAD to enter the current password.
 3. Press the UP and DOWN DIRECTION BUTTONS to select the appropriate country.
 4. Press the ENTER BUTTON to confirm it.
 5. Press the RETURN BUTTON to cancel.
5. Network - Press the LEFT and RIGHT DIRECTION BUTTONS or ENTER to enter and exit the Sub-Menu. Press the UP and DOWN DIRECTION BUTTONS to navigate the Sub-Menu.
 1. Internet Connection
 1. Press the RIGHT DIRECTION BUTTON or ENTER to select this option.
 2. Press the UP and DOWN DIRECTION BUTTONS to select “Enable” or “Disable.”
 3. Press the ENTER BUTTON to confirm it.
 2. Interface
 1. Press the RIGHT DIRECTION BUTTON or ENTER to select this option.
 2. Press the UP and DOWN DIRECTION BUTTONS to select “Ethernet” or “Wireless.”
 3. Press the ENTER BUTTON to confirm it.
 3. Information
 1. Press the RIGHT DIRECTION BUTTON or ENTER to display network information.
 2. Press the RETURN BUTTON to exit.
 4. Connection Test
 1. Press the RIGHT DIRECTION BUTTON or ENTER to test the network connection.
 5. IP Setting
 1. Press the RIGHT DIRECTION BUTTON or ENTER to select this option.

2. Press the UP and DOWN DIRECTION BUTTONS to select “Auto” or “Manual.”
3. Press the ENTER BUTTON to confirm it.



2. Display Setting

1. TV - Press the LEFT and RIGHT DIRECTION BUTTONS or ENTER to enter and exit the Sub-Menu. Press the UP and DOWN DIRECTION BUTTONS to navigate the Sub-Menu.
 1. TV Screen
 1. Press the RIGHT DIRECTION BUTTON or ENTER to select the Sub-Menu.
 2. Press the UP and DOWN DIRECTION BUTTONS to select “16:9 Full,” “16:9 Normal,” “4:3 Pan&Scan,” or “4:3 Letterbox.”
 3. Press the ENTER BUTTON to confirm it.
 2. Resolution
 1. Press the RIGHT DIRECTION BUTTON or ENTER to select the Sub-Menu.
 2. Press the UP and DOWN DIRECTION BUTTONS to select “Auto,” “480I/576I,” “480P/576P,” “720P,” or “1080I.”
 3. Press the ENTER BUTTON to confirm it.
 3. TV System
 1. Press the RIGHT DIRECTION BUTTON or ENTER to select the Sub-Menu.
 2. Press the UP and DOWN DIRECTION BUTTONS to select “NTSC,” “PAL,” or “Multi.”
 3. Press the ENTER BUTTON to confirm it.
 4. Color Space
 1. Press the RIGHT DIRECTION BUTTON or ENTER to select the Sub-Menu.
 2. Press the UP and DOWN DIRECTION BUTTONS to select “RGB,” “YCbCr,”

- “YCbCr422,” or “Full RGB.”
- 3. Press the ENTER BUTTON to confirm it.
- 5. HDMI Deep Color
 - 1. Press the RIGHT DIRECTION BUTTON or ENTER to select the Sub-Menu.
 - 2. Press the UP and DOWN DIRECTION BUTTONS to select “30 bits,” “36 bits,” “48 bits,” or “Off.”
- 2. Video Process - Press the LEFT and RIGHT DIRECTION BUTTONS or ENTER to enter and exit the Sub-Menu. Press the UP and DOWN DIRECTION BUTTONS to navigate the Sub-Menu.
 - 1. Video Adjust
 - 1. Press the RIGHT DIRECTION BUTTON or ENTER to select the Sub-Menu.
 - 2. Press the UP and DOWN DIRECTION BUTTONS to select and adjust “Brightness,” “Contrast,” “Hue,” or “Saturation.”
 - 3. Press the RETURN BUTTON to exit.
 - 2. Sharpness
 - 1. Press the RIGHT DIRECTION BUTTON or ENTER to select the Sub-Menu.
 - 2. Press the UP and DOWN DIRECTION BUTTONS to select “High,” “Middle,” or “Low.”
 - 3. Press the ENTER BUTTON to confirm it.
- 3. Motion Video Process - Press the LEFT and RIGHT DIRECTION BUTTONS or ENTER to enter and exit the Sub-Menu.
 - 1. Video Mode
 - 1. Press the RIGHT DIRECTION BUTTON or ENTER to select the Sub-Menu.
 - 2. Press the UP and DOWN DIRECTION BUTTONS to select “Standard,” “Vivid,” or “Smooth.”
 - 3. Press the ENTER BUTTON to confirm it.



3. Audio Setting

1. Audio Output - Press the LEFT and RIGHT DIRECTION BUTTONS or ENTER to enter and exit the Sub-Menu. Press the UP and DOWN DIRECTION BUTTONS to navigate the Sub-Menu.
 1. SPDIF – choose settings for the Coaxial and Optical outputs
 1. Press the RIGHT DIRECTION BUTTON or ENTER to select the Sub-Menu.
 2. Press the UP and DOWN DIRECTION BUTTONS to select “Bitstream,” “PCM,” “Reencode,” or “Off.”
 3. Press the ENTER BUTTON to confirm it.
 2. HDMI – choose settings for the HDMI output
 1. Press the RIGHT DIRECTION BUTTON or ENTER to select the Sub-Menu.
 2. Press the UP and DOWN DIRECTION BUTTONS to select “Bitstream,” “PCM,” “Reencode,” or “Off.”
 3. Press the ENTER BUTTON to confirm it.
 3. Down_samp - downsampling
 1. Press the RIGHT DIRECTION BUTTON or ENTER to select the Sub-Menu.
 2. Press the UP and DOWN DIRECTION BUTTONS to select “48K,” “96K,” or “192K.”
 3. Press the ENTER BUTTON to confirm it.
 4. DRC
 1. Press the RIGHT DIRECTION BUTTON or ENTER to select the Sub-Menu.
 2. Press the UP and DOWN DIRECTION BUTTONS to select “Off,” “On,” or “Auto.”
 3. Press the ENTER BUTTON to confirm it.
2. Speaker Setting - Press the LEFT and RIGHT DIRECTION BUTTONS or ENTER to

enter and exit the Sub-Menu. Press the UP and DOWN DIRECTION BUTTONS to navigate the Sub-Menu.

1. Configuration

1. Press the RIGHT DIRECTION BUTTON or ENTER to select the Sub-Menu.
2. Press the UP and DOWN DIRECTION BUTTONS to select “2.x,” “3.x,” “4.x,” “5.x,” or “6.x.”
3. Press the ENTER BUTTON to confirm it.
4. Subsequent menus will appear to allow you to select the appropriate surround and subwoofer configuration for your speakers.
5. Press the RETURN BUTTON to exit.

2. Test tone

1. Press the RIGHT DIRECTION BUTTON or ENTER to select the Sub-Menu.
2. Your speaker configuration will appear for you to select Size, Trim, and Delay settings for each channel.
3. Press the RETURN BUTTON to exit.

3. Post Process - Press the LEFT and RIGHT DIRECTION BUTTONS or ENTER to enter and exit the Sub-Menu. Press the UP and DOWN DIRECTION BUTTONS to navigate the Sub-Menu.

1. EQ – select from available equalization settings

1. Press the RIGHT DIRECTION BUTTON or ENTER to select the Sub-Menu.
2. Press the UP and DOWN DIRECTION BUTTONS to select “Off,” “Rock,” “Pop,” “Live,” or “Dance.”
3. Press the ENTER BUTTON to confirm it.

2. UpMix

1. Press the RIGHT DIRECTION BUTTON or ENTER to select the Sub-Menu.
2. Press the UP and DOWN DIRECTION BUTTONS to select “Off,” or “NEO6.”
3. Press the ENTER BUTTON to confirm it.
- 4.

4. System Information – displays the current software version and the unit's MAC address.

Storage Information

Troubleshooting

Incorrect operations are often mistaken for trouble and malfunctions. If you suspect that something is wrong with the unit, check the list below for sometimes the troubles lie within another component. Remember to try inspecting other components and electrical appliances in use. If the trouble cannot be rectified even after exercising the steps listed below, contact Acesonic at +1-626-820-0645 to inquire about repairs.

Reset to factory settings

- Resetting the unit to factory defaults will likely solve more than 90% of problems encountered.
- Power the unit down then back up by unplugging and plugging the power cord back (not the Power Button or the remote).
- Restore the factory settings through the Preferences Menu.
 - General Setting
 - System

- Load Default
- Yes

Picture disturbance during playback

- The player is compatible with Macro-Vision System copy guard. Some discs include a copy prevention signal, and when this type of disc is played back, stripes, etc may appear on some sections of the picture depending on the TV. This is not a malfunction.

When recorded or copied there is a disturbance in the playback picture

- This player is compatible with copy prevention technology. Some discs include a copy prevention signal and the copy guard system will prevent proper playback.

Improper operation of TV set occur

- Some TVs that have wireless remote functions may not operate properly with this remote control.

No sound

- Inspect the KOD-4000 to confirm it is connect to audio equipment and that the audio equipment or TV is connected to the player.
- Check that the volume levels on the TV and audio equipment are audible.
- Check the cables connecting the player to audio equipment or TV.
- The digital signal is prohibited for some discs.
- The PAUSE mode is engaged.

Distorted sound

- Check connections on the KOD-4000 and audio equipment or TV.
- Check input and volume settings on the audio equipment or TV.
- The connection is made to the amplifier's PHONO connection. Try connecting to a LINE in connection instead.

No picture

- Check the connections between the TV and/or audio equipment and the KOD-4000.
- Check the TV to see if its on the correct input or channel to view the player.

Screen is black and white, wavy, or contains static

- The unit is in the wrong video mode

Distorted picture

- Check connections between the TV and the KOD-4000.
- Check the TV to see if its on the correct input or channel to view the player.

- Inspect the RCA or HDMI cable.

No power

- Check to see that the AC power cord is plugged into the wall and the player.

No microphone volume

- Check microphone connection.
- The microphone is turned off. Many microphones have an on/off switch.
- Set the microphone volume in the microphone menu that is accessed via the remote control.
- The unit is not correctly connected to an amplifier or TV.

There is microphone feedback and screeching

- The microphone is too close to the speakers. Move the microphone further away or lower the volume of the microphone input.

Remote won't work

- Ensure that there is a clear path between the KOD-4000 and the remote control or decrease the angle between the remote control and the sensor.
- Replace the batteries.
- Move the remote control closer to the sensor.
- The batteries are incorrectly positioned in the remote. Remove and reseal the batteries.

The KOD-4000 boots up to a blue screen

- There may be possible hard drive damage or database corruption. Call Acesonic customer service at +1-626-820-0645.

The unit cannot read the USB device

The device may be incompatible

FAQ (Frequently Asked Questions)

- No microphone sound?
 - **Check of the volume of the microphone is off.**
- Remote controller doesn't work?
 - **Check batteries.**
- No picture?
 - **Check if RCA or HDMI video connections are correct.**
- How many songs can I transfer to my KOD-4000 HD?
 - **This depends entirely on the HDD capacity and the file format(s) in which you choose to save your songs.**
- No sound?

- **Check if RCA or HDMI audio connections are correct.**

Firmware Updates

- For the latest updates please visit <http://www.acesonic.com/>.

Safety, Warnings, and Precautions

Mises en garde, precautions et procedures de surete

The lightning-with-arrowhead symbol inside a triangle alerts the user that potentially dangerous voltage in the product enclosure may constitute a risk of electric shock.

The exclamation point within a triangle alerts the user to important operating, maintenance, and servicing information in this User Manual.

CAUTION

To reduce the risk of electric shocks, fire, and possible injuries, you should not

- remove screws, buttons, jacks, or any part of the enclosure; or
- expose the product to rain or moisture

FCC ADVISORY (U.S.A.)

1. This equipment has been tested and found to comply with the limits for a Class B digital device, pursuant to part 15 of the FCC Rules. These limits are designed to provide reasonable protection against harmful interference in a residential installation.

This equipment generates, uses, and can radiate radio frequency energy and, if not installed and used in accordance with the instructions, may cause harmful interference to radio communications. However, there is no guarantee that interference will not occur in a particular installation. If this equipment does cause harmful interference to radio or television reception, which can be determined by turning the equipment off and on, the user is encouraged to try correcting the problem by one or more of the following measures:

- Increasing the distance between the radio/TV equipment and the KOD-4000
 - Connecting the radio/TV equipment to an outlet on a different circuit than the one into which the receiver is plugged
 - If necessary, consulting the dealer or an experienced radio/TV technician for help
2. **IMPORTANT:** When connecting the KOD-4000 to audio equipment, use only high-quality, shielded cables such as what is supplied with this product. Follow all installation instructions. Do not modify the equipment in any way, as this could void your FCC authorization to use the device in the U.S.A.

FOR CANADA/POUR LE CANADA

Caution: To prevent electric shock, match the wide blade of the plug to the wide slot, and fully insert.

Attention: Pour eviter les chocs electriques, introduire la lame la plus large de la fiche dans la borne correspondante de la prise et pousser jusqu'au fond.

This product does not exceed the Class B limits for radio noise emissions from digital devices as set out in the Canadian standard for interference-causing equipment (“Digital Apparatus, ICES-003” from the Department of Communications).

Cet appareil numérique respecte les limites de bruits radio électriques applicable aux appareils numériques de Classe B prescrites dans la norme sur le matériel brouilleur (“Appareils Numériques, NMB-003” édictée par le Ministre des Communications).

CLASS 1 LASER PRODUCT

DANGER: Visible laser radiation when open and interlock has failed or is defeated. Avoid direct exposure to the beam.

CAUTION: Do not open the top cover. There are no user serviceable parts inside the unit. Leave all servicing to qualified service personnel.

CAUTION – Disconnect the electrical plug to shut off the power completely. The POWER on the unit is not off from the electrical plug when the POWER SWITCH on the back panel is not in the ON position.

Important Safety Procedures

1. Read these instructions.
2. Keep these instructions.
3. Heed all warnings.
4. Follow all instructions.
5. Do not use this product near water, on wet surfaces, or in places where moisture may accumulate. Do not expose the device to dripping or splashing, and do not place items filled with liquids – such as vases, beverages, etc – on top. Clean only with a dry cloth.
6. Do not block any ventilation openings or set device on carpets or rugs. Maintain sufficient room on all sides for airflow.
7. Do not install near any heat sources such as radiators, heat registers, stoves, or other apparatus (including amplifiers) that produce heat.
8. Do not defeat the safety purpose of the polarized or grounding type plug. A polarized plug has two blades with one wider than the other. A grounding type plug has two blades and a third grounding prong. The wide blade or the the third prong are provided for your safety. If the provided plug does not fit into your outlet, consult an electrician for replacement of the obsolete outlet.
9. Protect the power cord from being walked on or pinched particularly at plugs, convenience receptacles, and the point where they exit from the apparatus.
10. Only use attachments and accessories specified by the manufacturer.
11. Use only with the cart, stand, tripod, bracket, or table specified by the manufacturer, or sold with the apparatus. When a cart is used, use caution when moving the cart.
12. Unplug this apparatus during lightning storms or if unused for a long period of time. Use apparatus combination to avoid injury from tip-cover.
13. Refer all servicing to qualified service personnel. Servicing is required when the apparatus has been damaged in any way, such as when the power supply cord or plug is damaged, liquid has been spilled or objects have fallen into the apparatus, the apparatus has been exposed to rain or

- moisture, does not operate normally, or has been dropped.
14. This product should be operated only from the type of power source indicated on the marking label. If you are not sure of the type of power supply to your home, consult your product dealer or local power company. For products intended to operate from battery power, or other sources, refer to the operating instructions.
 15. An outside antenna system should not be located in the vicinity of overhead power lines or other electric light or power circuits, or where it can fall into such power lines or circuits. When installing an outside antenna system, be extremely careful not to touch such power lines or circuits, as contact when they could be fatal.
 16. Do not overload wall outlets, extension cords, or integral convenience receptacles as this can result in a risk of fire or electric shock.
 17. Never push objects of any kind into this product through openings as they may touch dangerous voltage points or short-out parts that could result in a fire or electric shock. Never spill liquid of any kind on the product.
 18. When replacement parts are required, be sure the service technician has used replacement parts specified by the manufacturer or have the same characteristics as the original part. Unauthorized substitutions may result in fire, electric shock, or other hazards.
 19. Following any servicing or repair of this product, ask the service technician to perform the appropriate safety checks to ensure the product is in proper operating condition.
 20. The product should be mounted to a wall or ceiling only as recommended by the manufacturer. Any mounting of the product should follow the manufacturer instructions, and should use a mounting accessory recommended by the manufacturer.
 21. If your product is not operating correctly or exhibits a marked change in performance and you are unable to restore normal operation by following the detailed procedures in its operating instructions, do not attempt to service it yourself as opening or removing covers may expose you to dangerous voltage or other hazards. Refer all servicing to qualified service personnel.

NOTE: With proper care and maintenance, your KOD-4000 Karaoke-On-Demand Jukebox will give you years of dependable, enjoyable use. Make sure you are using proper power sources and good (unfrayed) cables at all times. Remember, any alterations or user repairs performed on the device voids your warranty.

Technical Specifications

- Video D/A Converter: 12bit/148.5MHz
- Audio D/A Converter: 24bit/192kHz
- Sophisticated Karaoke Functions
 - Dynamic Changing Background Video in MP3G
 - Song Database Management
- 1 x HDMI Connection Output (HDMI 1.3)
- 1 x CVBS Output
- 1 x YPbPr Output
- 1 x Optical Output
- 1 x Coaxial Output

- 1 x USB 2.0 Ports
- 1 x Ethernet Network Interface (RJ-45)
- 2 x Microphone Inputs

Multi-format Media Support

- Audio: MP3, AC3, AAC, WMA, WMAPro
- Video: MPEG1/2/4, Xvid, ISO, MKV, AVI, WMV9, VC1, H.264

Karaoke-On-Demand Total Solution

- IP-Based Media Streaming
- Secure Media Connectivity
- Download Protection for all types of content