

•
•

PROFESSIONAL AUDIO & KARAOKE SYSTEM

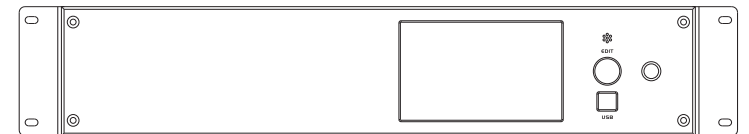
User Manual

Attention

To reduce the risk of fire or electric shock,
not expose this apparatus to rain or moisture!



•
•



SAFETY FOR USERS

All safety and operating instructions should be read before the product is operated.

Power: This unit should only use the same type as shown in this manual.

Power Cord Protection: Protect the power cord from being crushed; especially the power plugs.

Humidity: The unit should always be far away from water and/or moist surfaces.

Electronic Shock: Be careful that liquid is not spilled inside the unit through ventilation openings.

Temperature: Do not install near any heat sources such as radiators, stoves, heating resistance or other appliance(s) that produce heat.

Opening or Moving Covers: Refer any/all repairs or servicing to qualified service personnel. To prevent the risk of shock, do not attempt to service/repair this equipment yourself. Opening or moving covers may expose you to dangerous voltage or other hazard(s.)

Cleaning: Do not use volatile liquid such as alcohol, paint thinner or gasoline. Clean only using a dry cloth.

Smell: In the event of any suspicious burning smells or smoke, please power off and unplug the power cord.

Long Term Idle:

1. For your safety, please power off and unplug the power cord so as to prevent fire potential.
2. Prevent water, metal or other objects from falling inside the unit to avoid fire or electronic shock. If any of these occur, power off and unplug immediately and contact authorized service center for diagnostic.

Warning: Do not tuck cable or cords under the unit or between other objects. Do not put the power cord in the crowd. Avoiding fire or electronic shock.

INTRODUCTION AND CONTENTS

Thank you for choosing this product.

Be sure to inspect packaging and contents for any damages incurred during shipping and transit.

Please read this User Manual before you connect or operate this device.

CONTENTS

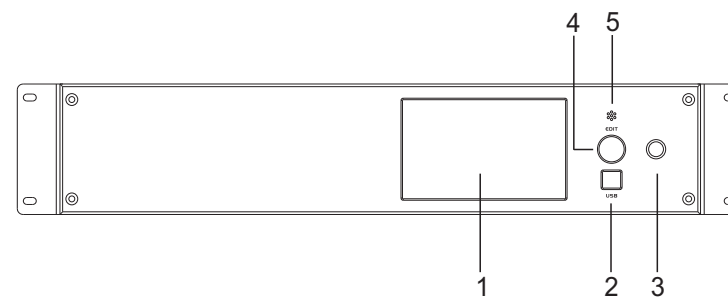
Introduction and Contents	01
Features	02
Front Panel and Functions	03
Back Panel and Functions	04-05
System Connection Diagram	06
Terminal Connection Diagram	07
Menu Function	08-13
Software Operation and Application.	14-26
Remote Control Keys and Functions	27
Technical Parameters	28

FEATURES

This device is a professional integrated design of all-digital Karaoke and cinema processor with 7.1 channels output. It supports DOLBY, DTS and other decoding format, also has the professional KTV sound effect; With multiple functions such as home theater, Vocal Effects, X-OVER, Limiter, Delay and other functions. Standard 2U case, flexible configuration and easy to use. Can be widely used in private cinema, Karaoke and cinema rooms, Senior club, enterprises and institutions multifunctional halls and other places. Make yourself enjoy the good sound and watch excellent movie.

- ▼ 5 inches/ 65.5K pixel full color / touch screen, EN / CN are optional.
- ▼ 4 in 2 out HDMI audio and video interface, coaxial and optical.
- ▼ All DOLBY / DTS 7.1 decoder are supported, 7.1 channels output.
- ▼ 16 bands PEQ for Music. Independent 16 bands PEQ for A/B way MIC.
- ▼ Professional KTV effect, echo & reverb, 3 bands PEQ, 4 levels feedback.
- ▼ 5 bands PEQ, LPF/HPF, polarity, delay, limiter and gain are for Main, Center, SUB and Surround output channels.
- ▼ Double DSP chips, 400MHz main frequency, 48KHz sampling frequency, 32bit processor, 24 bit AD/DA converter.
- ▼ USB, RS485, RS232, TCP/IP and wifi interface are housed.
- ▼ iPad and iPhone could get the access through WiFi.
- ▼ 10 groups of User Data for Save and Load.
- ▼ 2 levels lock function.
- ▼ REC output.

FRONT PANEL AND FUNCTIONS



1. Color LCD touch screen

It shows the output information and all kinds of adjusting parameters.

2. USB interface

Users can connect to computer by USB to update the program of this device or control this device by the software.

3. Standby button

You can turn on or off the device by this button, but this function is affected by the main switch on the back panel

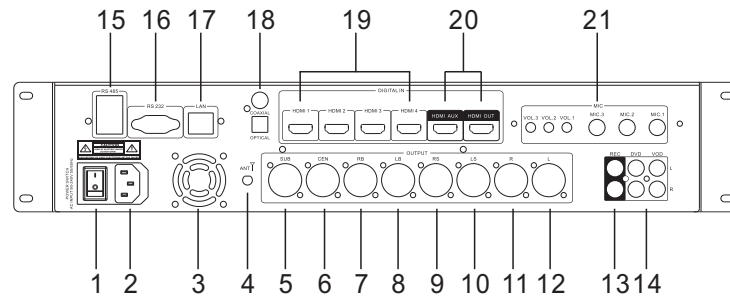
4. Edit

Rotate left or right to adjust the parameter.

5. Remote

This window receives the signal of the remote control.

BACK PANEL AND FUNCTIONS



- 1. Power switch AC INPUT 90-240V-50/60Hz**
- 2. Power socket**
- 3. Cooling fan**
- 4. WiFi signal antenna**
- 5. Subwoofer balanced output, connect to power amplifier**
- 6. Center balanced output, connect to power amplifier**
- 7. Rear Surround right balanced output, connect to power amplifier**
- 8. Rear Surround left balanced output, connect to power amplifier**
- 9. Surround right balanced output, connect to power amplifier**
- 10. Surround left balanced output, connect to power amplifier**
- 11. Main right balanced output, connect to power amplifier**
- 12. Main left balanced output, connect to power amplifier**

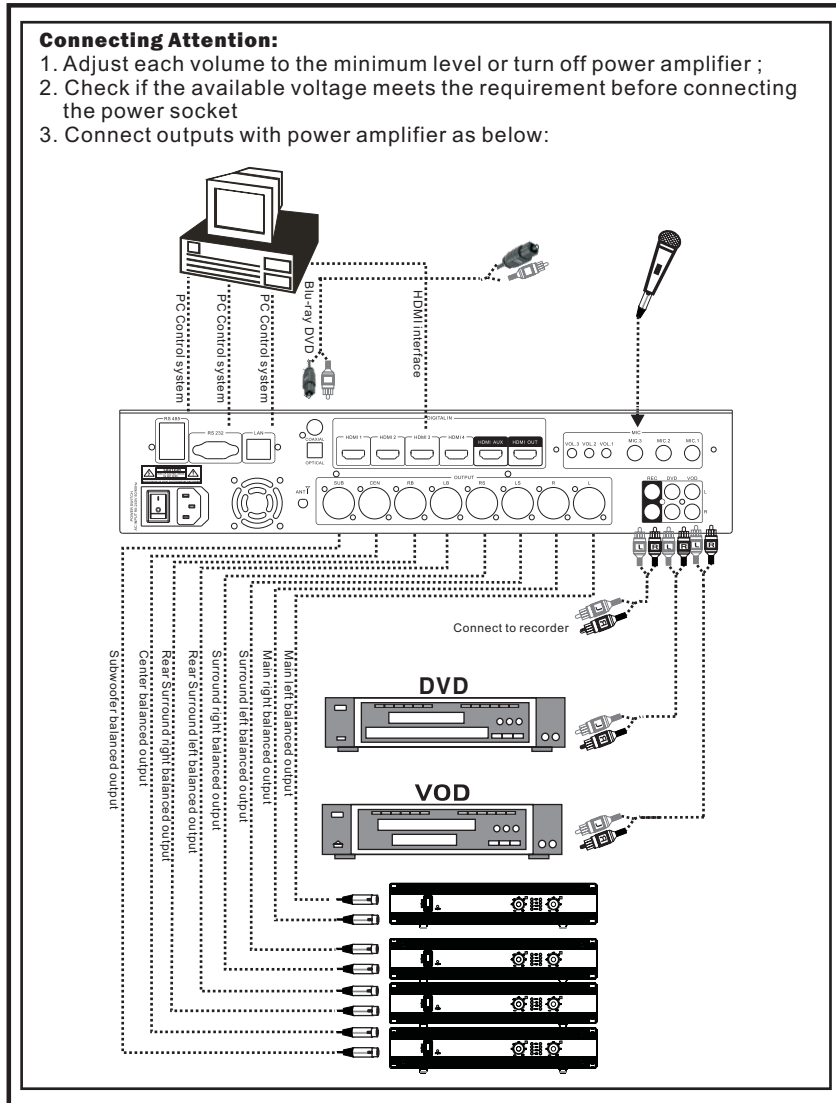
BACK PANEL AND FUNCTIONS

- 13. REC output**
- 14. Music input**
- 15. RS485 interface**
- 16. RS232 interface**
- 17. Ethernet interface**
- 18. Optical interface, Coaxial interface**
- 19. HDMI input**
- 20. HDMI output**
- 21. MIC input and volume**

SYSTEM CONNECTION DIAGRAM

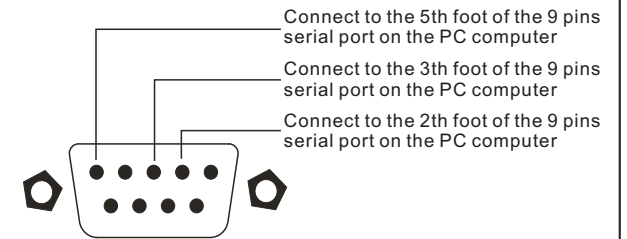
Connecting Attention:

1. Adjust each volume to the minimum level or turn off power amplifier ;
2. Check if the available voltage meets the requirement before connecting the power socket
3. Connect outputs with power amplifier as below:

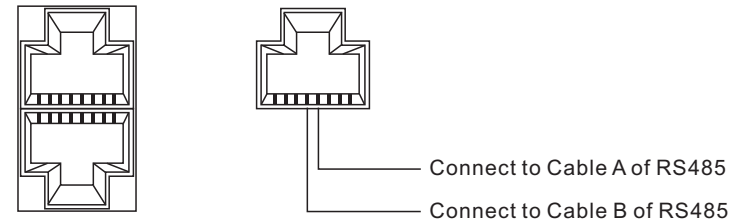


TERMINAL CONNECTION DIAGRAM

RS232 Terminal Connection Diagram:



RS485 Terminal Connection Diagram:

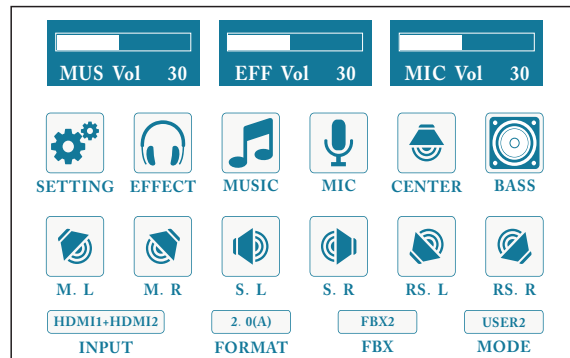


MENU FUNCTION

Basic functional Setting

Boot Interface

Upon powering on, the boot interface on the LCD will appear as illustrated:



Interface Introduction:

1. Music Volume

Range: 0-50. Touch the “Music Vol” on the screen, rotate EDIT to adjust the parameter.

2. Effect Volume

Range: 0-50. Touch the “Music Vol” on the screen, rotate EDIT to adjust the parameter.

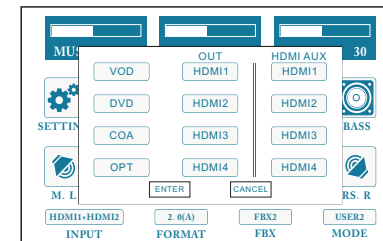
3. MIC Volume

Range: 0-50. Touch the “Music Vol” on the screen, rotate EDIT to adjust the parameter.

4. There are detailed submenu for Setting, Effect, Music, MIC, Center, Subwoofer, Main left, Main right, Surround left, Surround right, Rear Surround left, Rear Surround right.

MENU FUNCTION

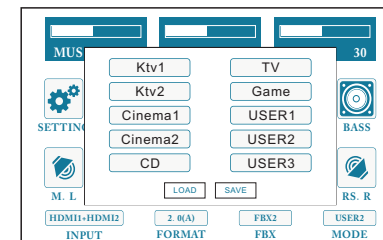
5. Audio & Video input Touch the “Input” on the screen. VOD, DVD, COAXIAL, OPTICAL, HDMI1, HDMI2, HDMI3, HDMI4 input sources are optional.



6. Audio input format 2.0, 5.1, 7.1 and Auto format are optional for input channel.

7. Feedback setting 4 levels feedback: FBX1, FBX2, FBX3, FBX4. OFF means turn off the feedback.

8. Program management



A. Load

10 groups of User Data for Load.

B. Save

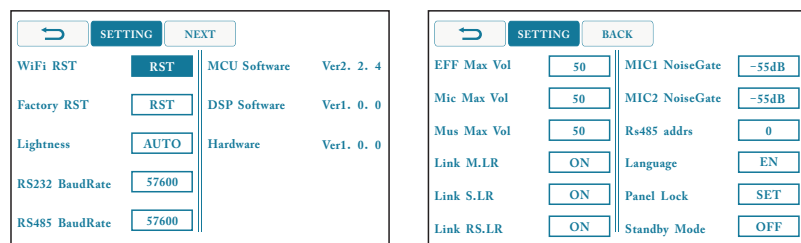
10 groups of User Data for Save.

MENU FUNCTION

Main Menu

1.Setting

There are 2 pages of setting for Setting menu, parameters can be set independently.



Setting1:

- A. Max Effect Volume: Rotate Edit knob to adjust.
- B. Max MIC Volume: Rotate Edit knob to adjust.
- C. Max Music Volume: Rotate Edit knob to adjust.
- D. Main Left/Right, Rear Surround right/left, Surround right/left can be linked to set synchronously.
- E. Noise Gate can be set independently for A/B way MIC.
- F. Address of RS485 can be set.
- G. Language: EN / CN are optional
- H. 2 levels Panel lock function to avoid any misoperation. Initial password is "1111". Input password and it will appear:
 - (a). One Level Lock: You can only adjust the EFF VOL, MIC VOL and MUSIC VOL;
 - (b). Two Level Lock: All the functions on the panel don't work, but you can control by PC software.

MENU FUNCTION

©. Password Reset: Reset the new password.

I. Standby: Turn on this button, once switch the power on, the device will open automatically.

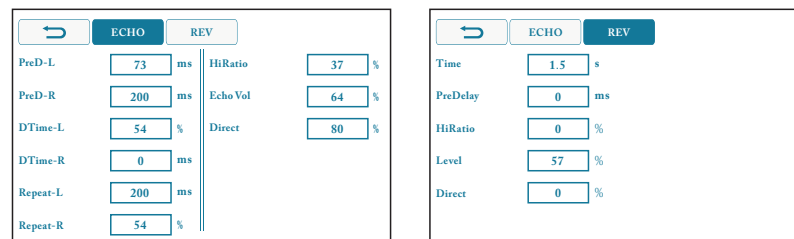
Setting2:

A: WiFi Reset, factory setting: Instant recovery to WiFi Reset and factory setting.

B. RS232, RS485 baud rate, Lightness can be adjusted.

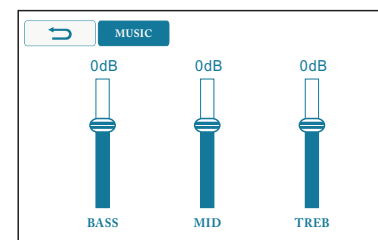
2.Effect

There are 2 pages of setting for Effect menu, Echo and Reverb menu, parameter can be set independently. Click it and rotate EDIT to adjust the parameter.



3.Music

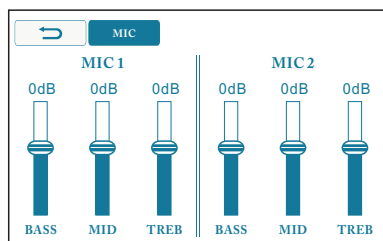
Each parameter can be set independently. There are Bass, Mid, Treble in Music menu. Rotate EDIT to adjust the parameter.



MENU FUNCTION

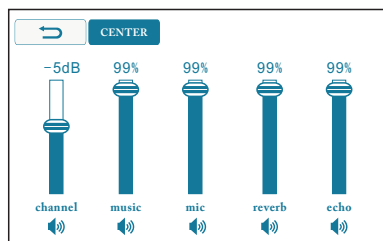
4. MIC

Each parameter can be set independently. There are Bass, Mid, Treble for independent A/B way MIC. Rotate EDIT to adjust the parameter.



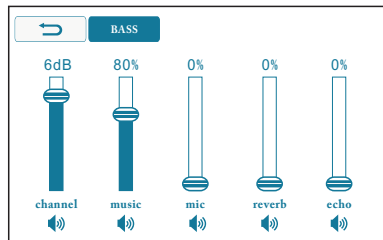
5. Center

There are Gain, MUSIC VOL, MIC VOL, Echo VOL and Reverb VOL in Center menu. Rotate EDIT to adjust the parameter.



6. Subwoofer

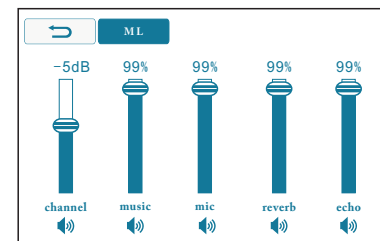
There are Gain, MUSIC VOL, MIC VOL, Echo VOL and Reverb VOL in SUB menu. Rotate EDIT to adjust the parameter.



MENU FUNCTION

7. Main left

There are Gain, MUSIC VOL, MIC VOL, Echo VOL and Reverb VOL in Main left menu. Rotate EDIT to adjust the parameter.



8. Main right

There are Gain, MUSIC VOL, MIC VOL, Echo VOL and Reverb VOL in Main right menu. Rotate EDIT to adjust the parameter.

9. Surround left

There are Gain, MUSIC VOL, MIC VOL, Echo VOL and Reverb VOL in Surround left menu. Rotate EDIT to adjust the parameter.

10. Surround right

There are Gain, MUSIC VOL, MIC VOL, Echo VOL and Reverb VOL in Surround right menu. Rotate EDIT to adjust the parameter.

11. Rear Surround left

There are Gain, MUSIC VOL, MIC VOL, Echo VOL and Reverb VOL in Rear Surround left menu. Rotate EDIT to adjust the parameter.

12. Rear Surround right

There are Gain, MUSIC VOL, MIC VOL, Echo VOL and Reverb VOL in Rear Surround right menu. Rotate EDIT to adjust the parameter.

SOFTWARE OPERATION AND APPLICATION

1. Connect the corresponding input source, then connect the corresponding output channels, and power on the machine.
2. If it does not connect to any external devices, you can have simple adjustment by buttons on the panel.
3. When it connects to the external devices by WiFi or USB, you will not be able to operate from the panel controls.
4. The effective range of WiFi is about 10 meters. But this may be affected by surrounding environments.

Connect Setting

1.Download of Software:

- (1). PC software can be downloaded from our website.
- (2). Apple application software can be downloaded from APP store. Search the keyword “K-Theater” and find the software, then you can download it.



2. Take the device named as “K-Theater-0804” for example:

Please check all the accessories and the machine code. Every device has an independent machine code on the back panel. When connect to the other equipment, the machine's name is the last 4 numbers of the machine code numbers.

The example machine's name is “K-Theater-0804”.

- (1). Turn on the machine and open the wireless network to search the machine's name “K-Theater-0804”, it is the last 4 numbers of the machine code numbers as the following pictures.

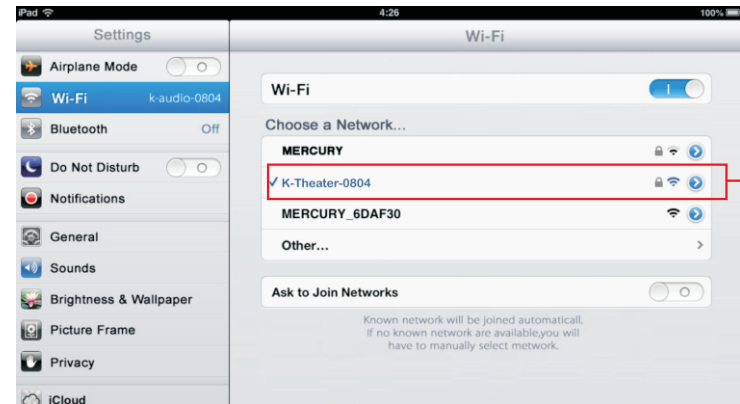


Machine's Name

SOFTWARE OPERATION AND APPLICATION

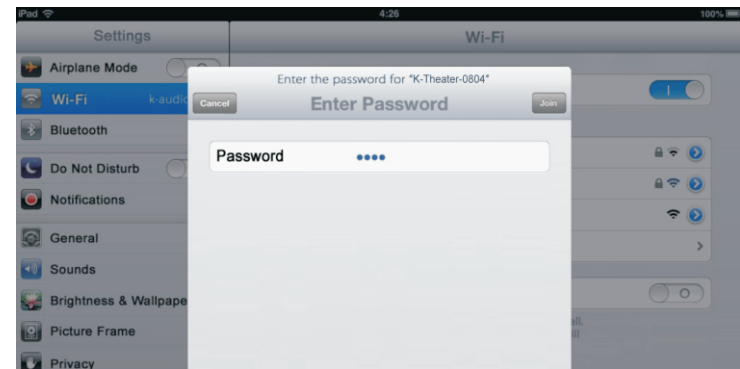
- (2). Apple application software setting: Get into setting, and open the wireless network to search the device. When you have searched it, click it and input the password to connect. The factory default password is “12345678”.

A.Example for the connection with iPad.



Machine's Name

Picture 1



Picture 2

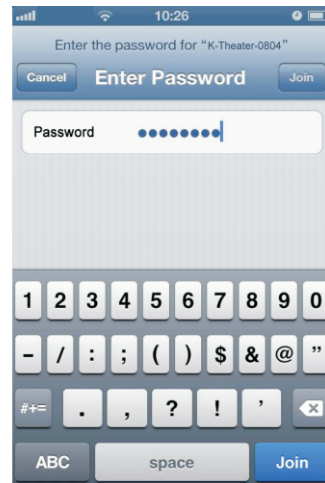
B.Example for the connection with iPhone..

Refer to the same way as connecting to iPad. As shown in picture:

SOFTWARE OPERATION AND APPLICATION



Picture 1



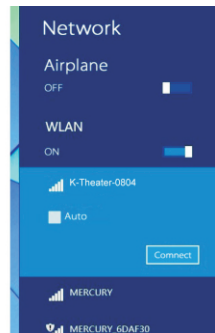
Picture 2

(3). PC software setting:

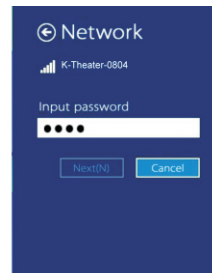
Refer to the same way as connecting to iPad/iPhone. Turn on the machine and open the wireless network on the right down corner of the computer to search the device. When you have searched it, click it and input the password to connect.



Picture 1



Picture 2



Picture 3

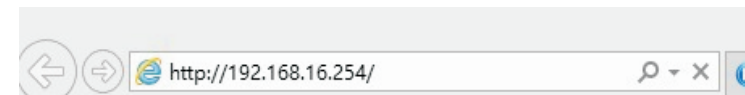
SOFTWARE OPERATION AND APPLICATION

Network Device Name and Password Setting:

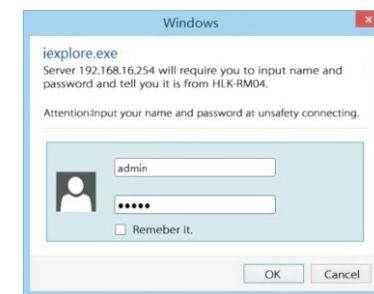
Your device comes with a pre-fixed name and default connecting password and you may change them according to your preference. The modification ways are the following statement.

A. Set by the PC:

1. Power on the machine, connect the machine with the computer by prior described methods.
2. Open your web browser and input "http://192.168.16.254" into the URL address bar:



3. Dialog box will appear. Input user name: admin and password: admin. Then you can enter the configuration page as illustrated:



4. Choose "English" -- "Serial Interface - Network Parameter Setting" on the configuration page. Data such as wireless network name, password and so on will appear on the right. These may be modified according to your preference. Click "OK" and wait a few minutes after modifying then restart the wireless network to connect the machine. The machine name has now been changed. Connect the machine in accordance to the new name and password you have set.

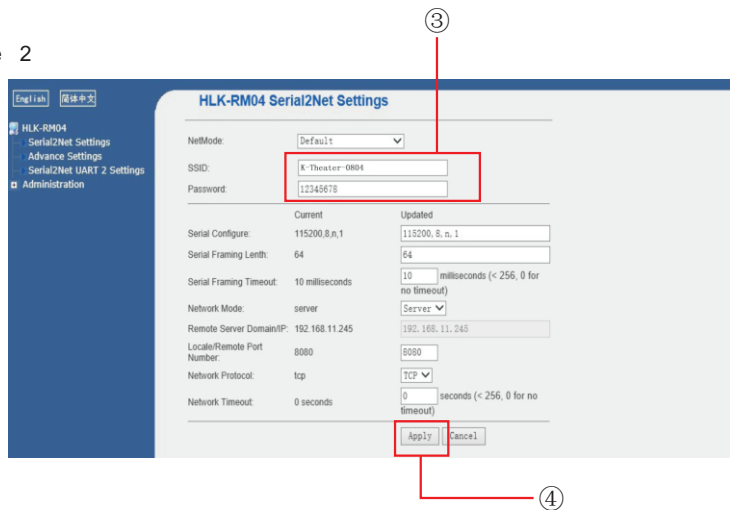
SOFTWARE OPERATION AND APPLICATION

Methods pictured 1 and 2 as follows:

Picture 1



Picture 2



B. Set by Apple mobile device:

Refer to the same way as setting in PC. Getting into the browser to modify.

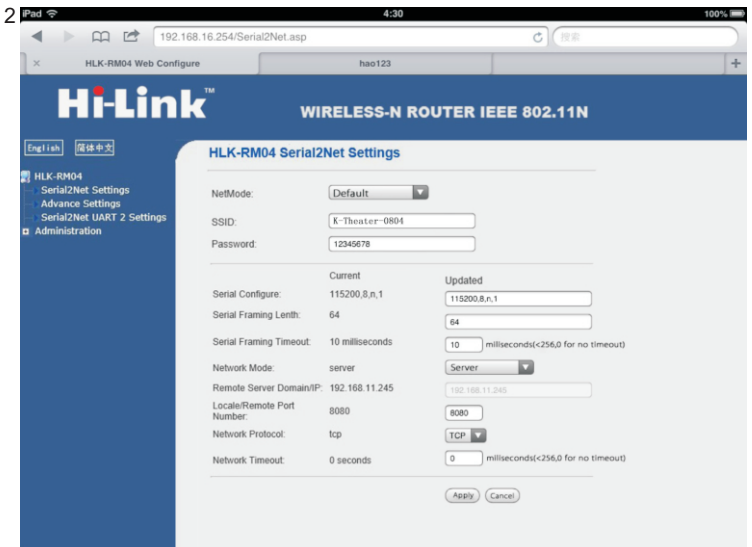
SOFTWARE OPERATION AND APPLICATION

Methods pictured 1 and 2 as follows:

Picture 1



Picture 2



SOFTWARE OPERATION AND APPLICATION

This machine can be applied to Apple wireless mobile setting, the editing software include PC and mobile Phones. Detailed operating as below:

iPhone editing interface:



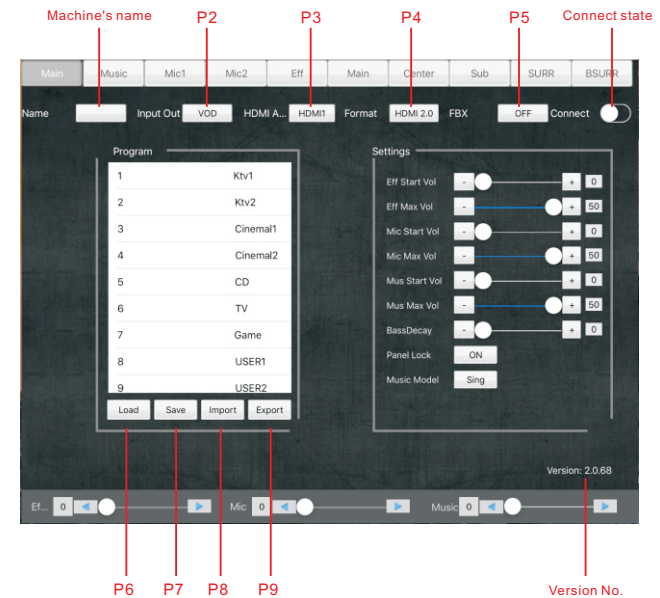
iPhone editing interface is clear. The software include Home pages, Effect, Setting interface. Audio input source include: VOD, DVD, COAXIAL, OPTICAL, HDMI, Video input source include: HDMI1, HDMI2, HDMI3, HDMI4. Free combination according to customers' needs. 4 levels feedback. WiFi indicator light will be on once connect successfully. There are 8 groups of user data for Load: KTV1, KTV2, Cinema1, Cinema2, CD, TV, Game, Custom.

SOFTWARE OPERATION AND APPLICATION

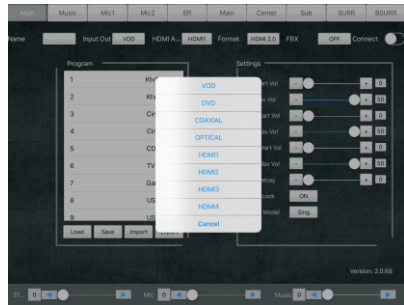
IPad editing interface:

Turn on the machine and open the WiFi setting to connect to it. iPad software is more professional than iPhone.

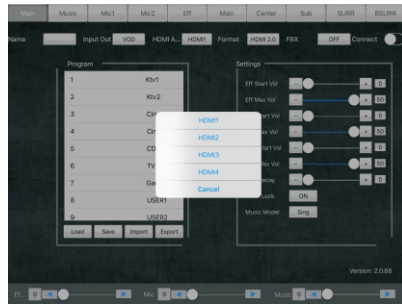
iPad editing interface:



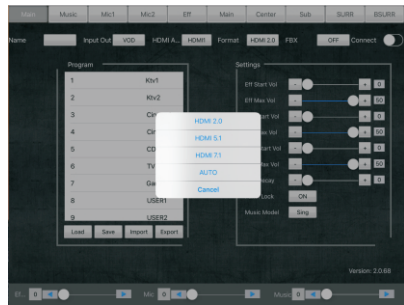
SOFTWARE OPERATION AND APPLICATION



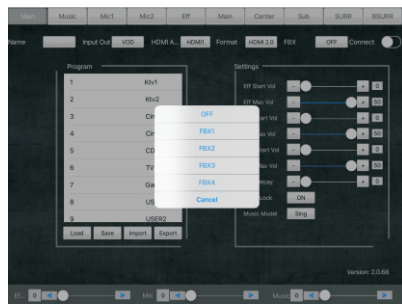
As picture 2
Audio input source include: VOD, DVD, COAXIAL, OPTICAL, HDMI 1-4.



As picture 3
Video input source include: HDMI 1-4.

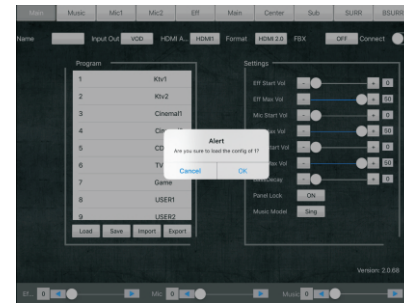


As picture 4
Audio mode

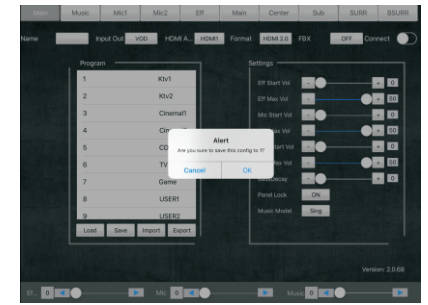


As picture 5
4 levels feedback

SOFTWARE OPERATION AND APPLICATION



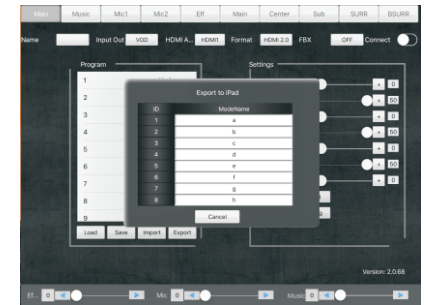
As picture 6
Load: Load for User data



As picture 7
Save: Save for User data



As picture 8
Import: Import User data to iPad



As picture 9
Export: Export User data to iPad

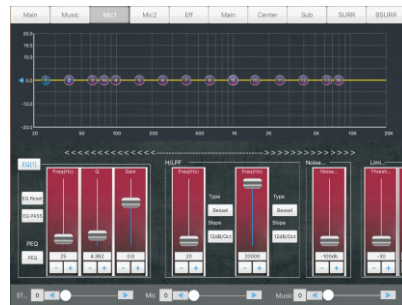
SOFTWARE OPERATION AND APPLICATION

IPad operation:

16 bands PEQ for Music. Independent 16 bands PEQ for A/B way MIC. Click EQ parameter to switch and adjust each PEQ, or operate on the curve graph. As shown in picture:



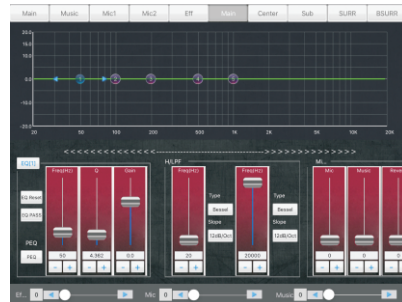
Music
16 bands PEQ+LPF/HPF



MIC
16 bands PEQ +LPF/HPF+NoiseGate
for A/B way MIC

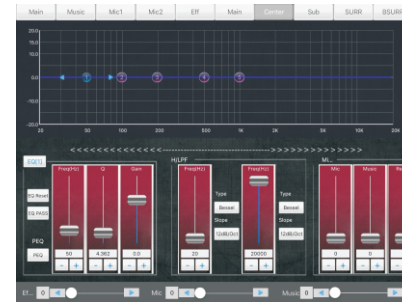


Effect
3 bands PEQ+LPF/HPF+Echo+Reverb

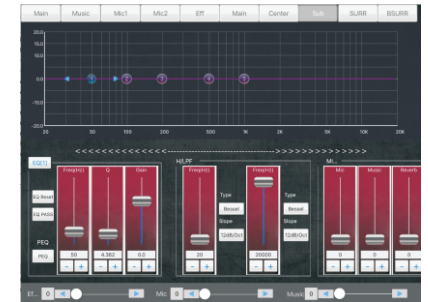


Main output
5 bands PEQ+LPF/HPF+Mixer+Gain+
Delay+Limiter

SOFTWARE OPERATION AND APPLICATION



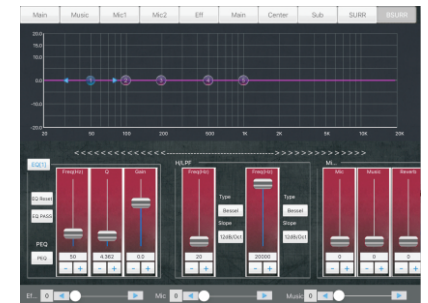
Center output
5 bands PEQ+LPF/HPF+Mixer+Gain+
Delay+Limiter



SUB output
5 bands PEQ+LPF/HPF+Mixer+Gain+
Delay+Limiter



Surround output
5 bands PEQ+LPF/HPF+Mixer+Gain+
Delay+Limiter

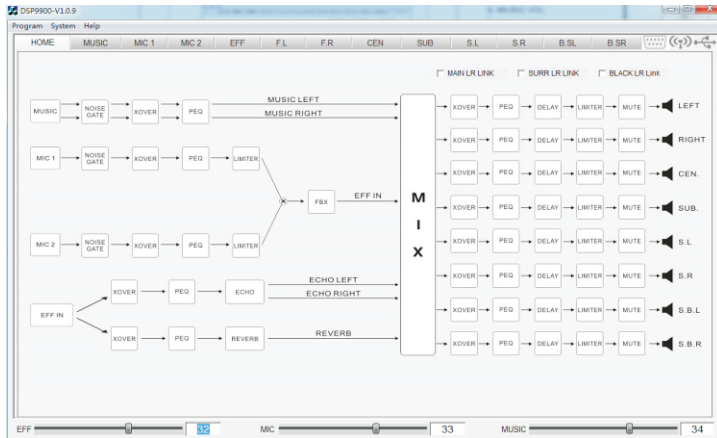


Rear Surround output
5 bands PEQ+LPF/HPF+Mixer+Gain+
Delay+Limiter

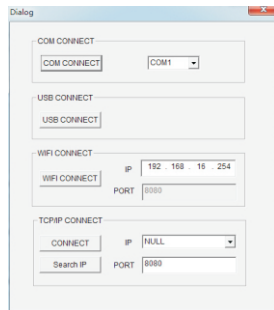
SOFTWARE OPERATION AND APPLICATION

PC software operation:

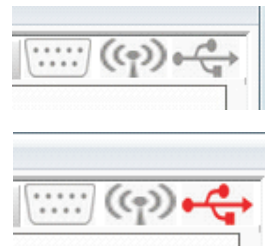
16 bands PEQ for Music and A/B way MIC for PC software. Connect the machine by WiFi or USB to software interface as illustrated in picture 1 below. Click the on-line button on the upper right of the software to connect the machine with the external equipment. There are two options on the screen: USB and WLAN, as picture 2 illustrated. When connected successfully, the upper right indicator will light on red.



Picture 1



Picture 2

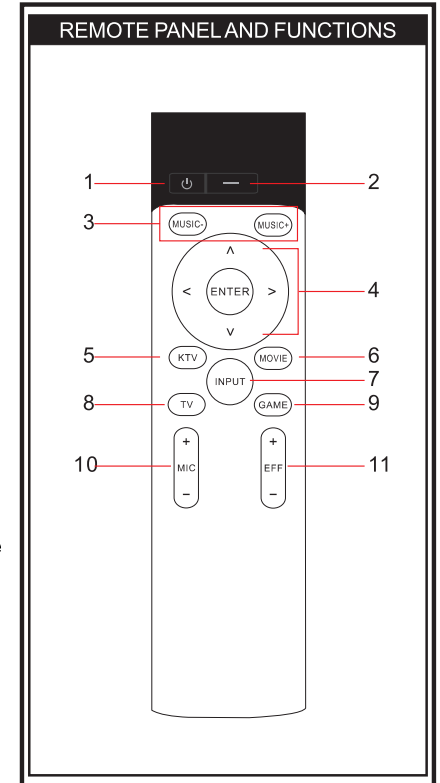


Picture 3

REMOTE CONTROL KEYS AND FUNCTIONS

Remote Control Keys and Functions

1. POWER
2. STANDBY
3. Music VOL
4. Directional selection key which are corresponding to the KTV mode
5. Direct load for the system parameters which are corresponding to the Cinema mode
6. Direct load for the system parameters which are corresponding to the TV mode
7. Input select
8. Direct load for the system parameters which are corresponding to the Game mode
9. Direct load for the system parameters which are corresponding to the Game mode
10. MIC VOL
11. Effect VOL



Note: all functions on the remote depend on the type of device, some devices may not have all the functions.

TECHNICAL PARAMETERS

Output channel	Main(R/L)/Center/SUB/SURR(L/R)	
S/N R	MIC	>85dB
	Music	>100dB
THD	MIC	<0. 01%
	Music	<0. 01%
Max Input Level	MIC	250mV
	Music	2V
Max Output Level	MIC	3Vrms
	Music	3Vrms
Sensitivity	MIC	15mV
	Music	300mV
Input Impedance(Ω)	MIC	10K unbalanced
	Music	47K unbalanced
Output Impedance(Ω)	300 Ω (balanced), 1K(unbalanced)	
Crosstalk of Channels	>85dB	
Feedback	4 levels feedback functions	
Parameter of Channels	MIC	Dual 16 bands PEQ+LPF+HPF for A/B way MIC, Gain: - 20dB, + 10dB
	Music	16 bands PEQ+LPF+HPF, Gain: - 20dB, + 10dB
	Main(R/L) Center SUB SURR(L/R)	Mixer+Polarity+5bands PEQ+LPF+HPF+Limiter+Delay+Gain
Decoding format	dolby AC-3. dolby digital . dolby prologic. DTS. DTS96/24	
Net Weight	4. 6KG	
Package Dimensions	560*310*130mm	

Standard Configuration List

Number	Name	Quantity
1	Device	1 PCS
2	User Manual	1 PCS
3	Power cord	1 PCS

FAULTS AND MAINTENANCE

Attention:

When it doesn't work, it is not always the problem of the device itself, maybe it is damaged in the shipment. Please check carefully by the following ways before you take the device to repair. If you sent the device back to our company for repairing, please package it, we will provide you with good services.

Failure	Reason	Solution
Output and screen doesn't work.	<input checked="" type="checkbox"/> Power socket has no power.	<input checked="" type="checkbox"/> Repair the power supply system.
	<input checked="" type="checkbox"/> Power plug is not in.	<input checked="" type="checkbox"/> Connect the power plug correctly, and make sure it is connected well.
	<input checked="" type="checkbox"/> Overload protection	<input checked="" type="checkbox"/> Pull out power plug and change the same type of fuse.
Output works but the screen doesn't work.	<input checked="" type="checkbox"/> Signal wires don't connect well.	<input checked="" type="checkbox"/> Connect signal wires well according to this user manual.
	<input checked="" type="checkbox"/> Main volume is turned down.	<input checked="" type="checkbox"/> Adjust the volume.
	<input checked="" type="checkbox"/> Signal wires don't connect correctly.	<input checked="" type="checkbox"/> Connect input correctly.
	<input checked="" type="checkbox"/> There is no output signal.	<input checked="" type="checkbox"/> Check the sound input system.
Only one output works.	<input checked="" type="checkbox"/> Signal wires don't connect well.	<input checked="" type="checkbox"/> Connect signal wires well according to this user manual.
	<input checked="" type="checkbox"/> Balanced potentiometer is to the extreme.	<input checked="" type="checkbox"/> Adjust the balanced potentiometer to the middle.
	<input checked="" type="checkbox"/> Signal wires don't connect correctly.	<input checked="" type="checkbox"/> Connect signal wires correctly.
	<input checked="" type="checkbox"/> Signal wires doesn't work.	<input checked="" type="checkbox"/> Check if the signal wires are open circuit.
There is no sound in the MIC or the sound is so low.	<input checked="" type="checkbox"/> MIC hasn't been turned on.	<input checked="" type="checkbox"/> Turn on the MIC.
	<input checked="" type="checkbox"/> MIC hasn't been plugged in completely.	<input checked="" type="checkbox"/> Plug in the MIC completely.
	<input checked="" type="checkbox"/> MIC volume has been turn down.	<input checked="" type="checkbox"/> Adjust the MIC volume to the reasonable level.
	<input checked="" type="checkbox"/> MIC doesn't work.	<input checked="" type="checkbox"/> Change the MIC.
Feedback happens or there is a lot of noise.	<input checked="" type="checkbox"/> MIC is too near to the loudspeaker.	<input checked="" type="checkbox"/> Keep the MIC far away from the loudspeaker.
	<input checked="" type="checkbox"/> MIC volume is too high.	<input checked="" type="checkbox"/> Adjust the MIC volume to the reasonable level.
	<input checked="" type="checkbox"/> MIC index is not the right one.	<input checked="" type="checkbox"/> Change the MIC of the same index.
	<input checked="" type="checkbox"/> MIC hasn't been plugged in completely.	<input checked="" type="checkbox"/> Plug in the MIC completely.